

WEATHER			
	Min.	Max.	Precip.
Wednesday, March 10	27	33	0.25
Thursday, March 11	29	34	Trace
Friday, March 12	27	33	Trace
Saturday, March 13	24	36	0.00
Sunday, March 14	29	40	0.00
Monday, March 15	27	39	0.10
Tuesday, March 16	24	27	0.02

ONE HUNDRED-FIRST YEAR—No. 39

12 Pages This Week

CHELSEA, MICHIGAN, THURSDAY, MARCH 18, 1971

15c per copy

SUBSCRIPTION: \$4.00 PER YEAR

Dress Code Adopted for High School

The following dress code was worked out by the principal and the Student Council at Chelsea High school, and has been adopted as an administrative regulation at Chelsea. It is not a school board policy.

DRESS CODE
Accepted March 15, 1971
The student's attire will be to the discretion of his parents and himself. If the student's dress interferes with the health and/or safety of the student, or disrupts the educational process of the school, it is the right of the teacher to ask the student to leave the classroom.

Actions to enforce the specific rules on dress and grooming necessary for health and safety which is determined to be disruptive to the functioning or educational processes of the school should be in accordance with the established disciplinary procedures of the school, and should be subject to the same review and procedures applicable to other disciplinary actions.

Police Dept. Moves into New Offices

Chelsea's Police Department has moved into their new offices in the Village Administration building. The offices, which were formerly needed by the department, feature a separate office for the chief of police, an interrogation room, a report room, and a considerably larger front office.

Also included in the new office area are two temporary lock-up cells. The two one-man cells will permit local police to house drunks, or other offenders, temporarily, until they have an opportunity to transport them to the county jail, if necessary, or until they can be properly checked out prior to release.

Also included in the building is a new office for the Village Administrator, Frederick Weber. He will be moving into his new office later this week.

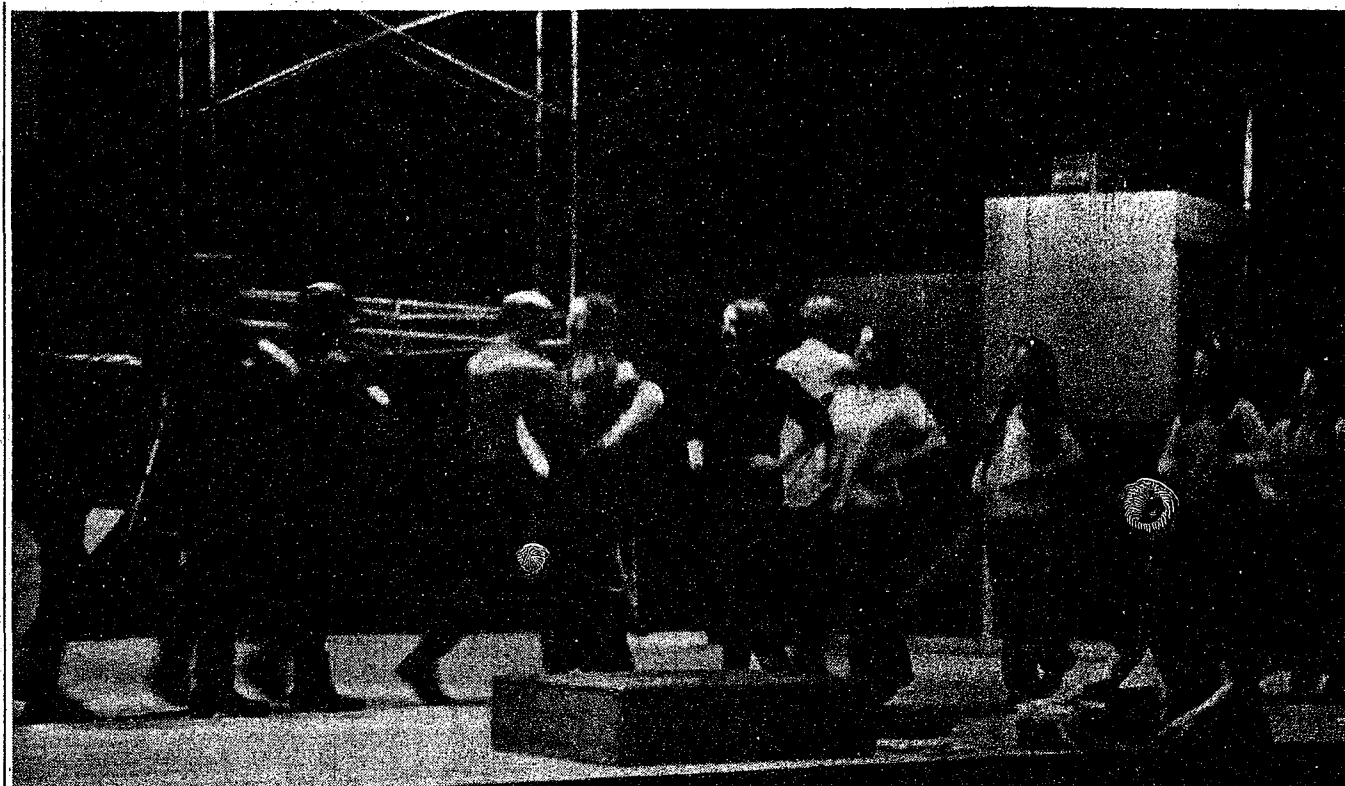
Former police offices will be turned over to the Village Electric & Water Dept. office for their use.

The Chelsea Standard

QUOTE

"If you wish to avoid foreign collision, you had better abandon the ocean."

Henry Clay
1777-1852



PREPARING TO "ENTERTAIN THE TROOPS" with a lively chorus of the show tune "Honey Bun" in the Chelsea High school musical production, "South Pacific," are, from left, Joan Yocum, Jane Haselschwardt, Anne McKernan, Kathy Leach, Carole Dietle, and Becky Van Riper. In the second row are, from right,

Jeff Daniels, Bob Wojcicki, Ron Gauss, Steve Bergman, and Dave Clemans. Patrick Pluck is providing the music (lower right). The finished performance opens tonight at 8 p.m. in the auditorium of the high school.

'South Pacific' Opens Tonight

The play "South Pacific," taken from James Michener's book, "Tales of the South Pacific," is the love story of Ensign Nellie Forbush, vivacious Navy nurse, and the gallant French planter, Emile de Becque. Nellie falls head-over-heels in love with this man in the Chelsea High school version of the production, which will open tonight, Thursday, March 18, at 8 p.m. in the High school auditorium. Other performances will follow on Friday and Saturday, March 19, and 20.

Nellie's love for Emile took when she discovers that de Becque was once married to a Polynesian woman, who is now dead, and has two small children by her. De Becque, seeing that Nellie is avoiding him, and knowing the reason, volunteers to go on a dangerous mission.

A tragic subplot of the play is the brief romance between a Poly-

nesian islander, Liat, and Lt. Joe Cable. Cable cannot bring himself to marry Liat, although he loves her, because of "carefully taught" prejudice. Cable is killed on a spy mission, and the couple's chances of happiness end.

Meanwhile, Nellie grows fond of de Becque's children, and realizes how foolish her prejudice has been. De Becque makes it back safely, and their romance has a happy conclusion.

The story of the play comes from "Tales of the South Pacific," which is a group of short stories that won the Pulitzer Prize for fiction shortly after it was published. Michener, author of the stories, wrote the tales following a job which he held with the U. S. Navy during World War II, in which he flew back and forth among the islands of the New Hebrides, and the New Guinea groups. In these hourners, he met

people in situations partly created by World War II, and partly created because of conflicting backgrounds of the people involved. Michener's stories are amusing in part, and partly romantic. Several of these stories were chosen to be made into the play to which the composing team of Rodgers and Hammerstein added their famous music and lyrics.

Chelsea High's version of "South Pacific" has emerged as the combined work of its composers, au-

thor, director, stars, and their supporting cast, and of course, the hard-working crew.

After all these have contributed their talents and energies, the final factor is the audience. According to one enthusiastic supporter of the play, "An audience must apply its composite heart and mind to a play, create it as something it believes should exist or destroy it as something it believes should not exist. So when the curtain opens tonight, the circle will be complete."

School Board, Supervisors Study Budget

Present Formula Leaves Only Small Increase to School District

Chelsea schools Board of Education and supervisors of the various townships in the school district met Tuesday evening, March 16, to discuss assessments, and the millage levy in light of recent valuation change in the county.

Present at the meeting were supervisors Walton Bohne, of Waterloo township; John Tandy, Dexter; George Bauer, Lyndon; Ed Coy, Lima; and the local County Commissioner Jay Bradbury.

School board members present included Don Irwin, Howard Haselschwardt, Herman Koenn, Charles Powers, Carolyn Smith, William Storey, and Superintendent Cameron, Business Manager Fred Mills, and Principal Alan Conklin.

According to Mills, a tabulation of the preliminary equalized valuation figures indicated that the 1971-72 total for the school district will be approximately \$64,200,000, with some adjustments still to be made. This is an increase of approximately \$11,500,000 in the State Equalized Valuation of the district.

The supervisors were required by law to assess at the new figures, which are to be at 50 percent of the fair market value of the property. The recent increase caused interest among the supervisors to know what the effect would be on the 1971-72 school budget.

Business Manager Mills pointed out that the two major sources of income for the school district are the local taxes, and the state aid. A change in property valuation has a direct effect on the amount of state aid a school will receive. "The present state aid formula provides a gross allowance of \$530.50 times the number of students, less 14 mills times the state equalized valuation.

"The increase in valuation results in a reduction in state aid," he claimed. "Based on the present state aid formula, and the levy of 22.20 mills, for every \$1,000,000 increase in SEV (State equalized valuation), the gross increase in tax revenue will be \$22,200, while

the loss in the state aid will be \$4,000. This will result in a net increase in revenue to the district of \$8,200."

Based on the present state formula for state aid, Chelsea's school district will receive less than \$100,000 extra due to the increased valuation, Mills claimed. This is less than a five percent increase in the school's budget. As a result, the board of education felt that they could not indicate the millage levy that will be necessary to operate the schools for the coming year.

Mills indicated that there are many unknown factors with which the school will have to deal. One of these is student enrollment for the coming year, while others concern a possible change in the 1971-72 state aid formula, and the results of negotiations for a new Master Contract with the CEA.

Also to be considered, Mills stated, is the fact that all schools must now provide supplies for all students, as a result of a ruling by the state's attorney general. That resulted in increased cost of \$40,000 to the school district this past year. A loss of state aid, which was a part of the reductions announced by Governor Milliken in mid-February, totaled \$15,000 to Chelsea schools, thus far, Mills claimed.

Not discussed at Tuesday evening's meeting, but also of concern to the schools is the money needed to meet the principal and interest requirements on the 1956, and 1965 Debt Retirement Funds. It will remain nearly the same as last year's figure. In past practice, Mills stated, the millage levy to meet these requirements has been reduced as the state equalized valuation has increased. Hence, the exact millage for the debt retirement fund requirements to be considered will not be known until the final SEV figures are available.

Townships which lie within the Chelsea school district include Sylvan, Dexter, Lima, Lyndon, Freedom, Sharon, Waterloo, and Grass Lake.

Many Irate Citizens Still Grumbling About Hike in Assessments

Auto Thief Leaves One But Takes Another

A stolen car from Battle Creek recovered, and a car from Chelsea, stolen, within the same 24-hour period points a finger to a single thief.

On the evening of Thursday, March 11, the wrecker from Smith's Mobil station was called to attend a disabled motorist. When the driver of the wrecker indicated that the vehicle could not be repaired on the spot, the motorist had the vehicle towed to the service station, where he said he would pick it up the next morning. He never returned.

Several days later, Smith's Mobil notified Chelsea police officer McDougall, who ran a LEIN check on the vehicle, and found that it had been stolen the afternoon of March 11, from Battle Creek. It was a 1968 burgundy colored Chevrolet.

The same evening, a car in the used-car lot of Spaulding Chevrolet, a 1964 turquoise Chevrolet, was stolen from the lot. Fred Klink reported the theft on the morning of March 12 to the police department.

It is thought that the suspect, who is between the ages of 27 and 32 years old, and stands 5'9", weighing 150 to 165 pounds, who left the stolen car at Smith's Mobil, also stole the car from Spaulding Chevrolet. He was described by witnesses at Smith's Mobil as being of medium complexion, wearing a mustache, and was "calm, and fairly neat in appearance."



PATRICK PLUCK

Patrick Pluck Wins Gold Key Poetry Award

Patrick Pluck, senior at Chelsea High school, won a gold key award in the Detroit News sponsored Writing Awards Contest. The award was received for an entry of various poetic selections, and is the highest award given in that area.

More than 6,500 entries were received in this contest, from 350 schools. Only 14 other students were awarded gold keys for their works.

Pluck's poetry was originally written for the English classes of Miss Lynn Williams, and they were entered at her suggestion.

The award (gold key, dictionary, and certificate of merit), will be sent to Chelsea High school Principal Charles Lane for presentation.

Pluck's other interests include debate, Forensic activities, and classical music. Patrick is the son of Mr. and Mrs. George Pluck, 16610 Gorton Rd.

One of Patrick's award winning poems is included below:

TRIOLET
That which then was thought enduring,
Time will even yet betray;
And forgotten each, in sweet oblivion spring;
That which then was thought enduring,
The inconstant heart will rise again to sing,
Some soon approaching other day.
That which then was thought enduring,
Time will even yet betray.

Frank Reed is in St. Joseph Mercy Hospital, room 421, bed 2. He was taken in on March 16.

Lima Supr. E. Coy Suggests Petitioning for Change in Law

A number of irate taxpayers in the surrounding areas have been grumbling this past week concerning their recent property tax assessments. Most of the citizens are less concerned by the increase in the value of their land, (assessments are figured at one-half the market value of the property, by state law), than they are worried about the existing tax rate and tax laws.

In a letter to the editor in this week's issue of The Standard, one angry citizen mentioned the possibility of withholding the payment of property taxes. In his letter, the taxpayer indicated that at the Lima Board of Review, he was given support of this proposal by the individual members of the board.

In conversation with the Lima township supervisor, Edwin Coy, it was learned that the board was not acting as a legal group when such support was given this, and many other tax-paying citizens. Instead, Coy mentioned, the board felt that many people had a just right to protest, not their assessment, but the high rate of property taxes, and the present system of taxation as a whole. Coy indicated that many citizens appearing before the Board of Review asked if withholding taxes would effect any changes. "It is certainly a possible way of drawing attention to the problem that exists with taxation," Coy claimed.

It is, of course, illegal to withhold one's property taxes. Charges for such a four percent penalty plus one-half percent per month interest. That amounts to a total of 10 percent interest for withholding one's taxes for one year. Also, after one has been delinquent in paying his taxes for three years, his property is sold by the state to recover the accumulated charges.

Coy said that a more realistic group action to effect lower, and more equitable taxation, would be to petition one's legislator at the state level, to effect a change in the present tax laws. Half of the people who work within the state of Michigan do not have to pay property taxes, directly, he claimed. By the same token, many of these people benefit directly from the schools, and so forth, which property taxation provides.

A more just tax, he thought, would be a form of income tax to support the schools. This would give a break to the farmers and senior citizens, who are presently most heavily hit by property taxes.

"Land is no longer an indication of wealth," Coy claimed, adding that therefore it should not be forced to bear the burden of most of the school budget.

Approximately 85 percent of the school's budget goes toward the operating cost of the schools, teachers' salaries, and so on, Coy stated. The remaining 15 percent is for actual construction, maintenance of buildings, and other land oriented expenditures.

The supervisor cited a bill presently in the state legislature, which was initiated by State Representative Roy Smith, from the 52nd district. Smith's bill, which is called "The Fair-Share Program," calls for some basic changes in the tax structure. The "Fair-Share" would mean that all millage required for the operation of the schools would be taken off the tax rolls. That money would then be collected by the state through a special increase in the state income tax, and paid directly to the schools.

In the Chelsea district, this could mean a reduction by 65 percent of the tax rate presently being given to the Chelsea schools. The remaining 15 percent, and any additional millages required for school bonding proposals, would remain the burden of the property taxpayers.

This is, in Coy's thinking, a more realistic avenue to take when considering tax reform, and the bill is one of several being proposed by state legislators in the interest of tax reform.

Present property tax rate for those living within the Chelsea school district is \$37.48 per \$1,000 assessed value, he said. Of that sum, Chelsea schools receive \$27.86, per \$1,000 while the Washtenaw Intermediate school district receives \$1.80. Washtenaw Community College gets \$1.63, and the Juvenile Court receives \$.11.

Washtenaw county's operating budget receives a sum of \$5.63, per assessed \$1,000 and the township receives \$1.

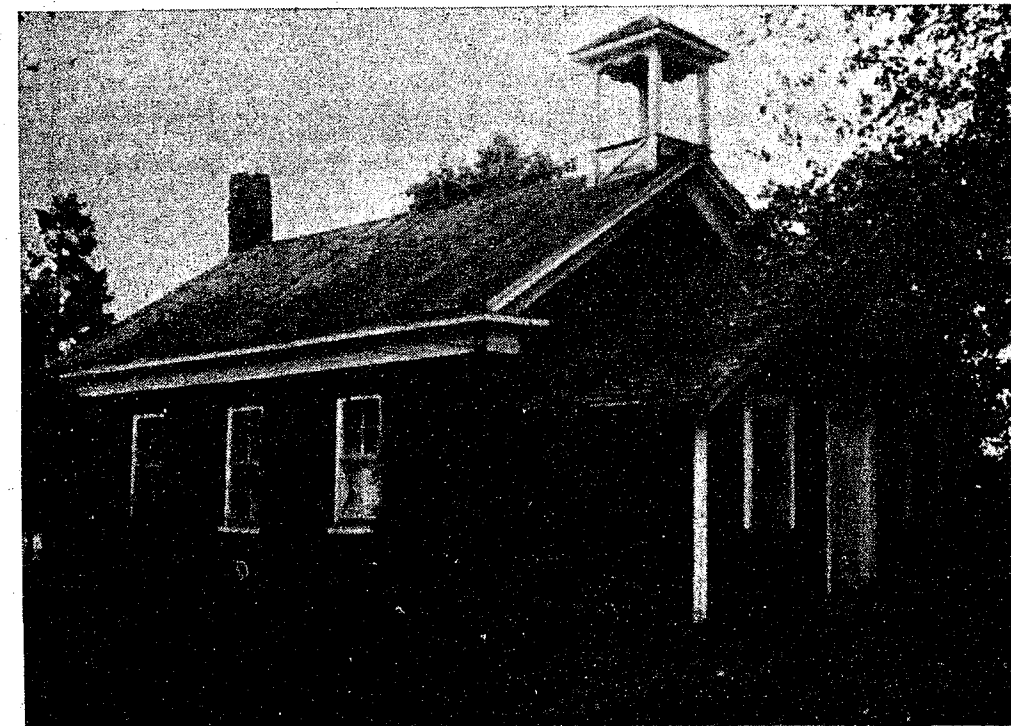
(Assessments climbed by an average of 31 percent within Lima township, Coy added, and unless the tax rate is cut, it will mean an increase in revenues for the various agencies by about 30 percent.)

Chelsea Youths Earn State FFA Degrees

Members of the Chelsea FFA Chapter will be among approximately 1,500 persons attending the 43rd annual State FFA Convention at Michigan State University, East Lansing, on March 24, 25, and 26 during Farmers' Week. The theme will be "FFA—Involved in America's Future."

Bill Kushmaul and Neil Rothfuss of the Chelsea FFA Chapter have been named to receive the State FFA Degree, which will be conferred Thursday, March 25, in the University Auditorium. The degree may be earned in production agriculture or agribusiness. Both Kushmaul, chapter president, and Rothfuss, chapter secretary, have livestock as the basis for their supervised agriculture experience programs.

The Star State Farmer will be (Continued on page three)



THE LITTLE RED SCHOOLHOUSE located across the street from the Freedom Township Hall, on Pleasant Lake Rd., will soon become a branch office of the Union Savings Bank in Manchester. The building will either have to be demolished, or moved, if

Manchester Bank Will Open Branch at Pleasant Lake

A prevalent American folkism links education with money. The theme "Stay in school, and you'll earn more money" has often been repeated to students throughout the past years.

Manchester's Union Savings Bank, in perhaps a token play on this theme has purchased a former Manchester school district country school house, as a site for their new branch bank office.

The schoolhouse, which stands across the street from the Freedom Township Hall, on Pleasant Lake Rd., was formerly owned by Erwin and Waldmyer Haab, who had purchased it from the Manchester school district. The crumbling brick structure will unfortunately not be able to be

saved, bank officials claim. The structure is not sound, and will either have to be sold, and moved, or torn down, according to William Cray, present bank president.

Plans for the new branch office of the Union Savings Bank of Manchester are still incomplete, Cray indicated. Approval was secured this past week from the State Department of Banking in Lansing, and at a zoning board hearing of March 8, the board recommended that the site be re-zoned for commercial use. That zoning has not yet been approved, Cray indicated, so plans are still fragmentary, pending proper zoning.

The new building, while not a country schoolhouse, will, in

Cray's words, "fit in to the surrounding area." It will include all activities legally permitted to a bank's branch office. Drive-in, and walk-in banking will be provided.

It is hoped that the new branch office will be completed by this summer, Cray stated. The home office of the bank is located at 135 E. Main St., Manchester.

William Cray was named president of the Union Savings Bank in September 1970, to succeed former bank president Dan J. Boutell. Cray was previously head officer of the Iron River National Bank in the Upper Peninsula, and prior to that position, he was in banking in Iowa.

Supt. Cameron To Visit Russia

Charles S. Cameron, superintendent of the Chelsea School District, will be one of two Michigan superintendents of schools to participate in a three-week tour of the Soviet Union sponsored by the American Association of School Administrators.

Cameron, and 26 other school administrators from across the country, will leave for Russia on March 29, to spend several weeks touring the country, and visiting country's schools.

(According to the AASA, purpose of the trip is to include an examination of the curriculum, the standards of achievement, methods, organizational pattern, and administrative techniques of the Russian schools.)

Along with visits to the various types of schools, there will be seminar analysis of methodology, content, and climate of instruction, extra-curricular program, and professional status. History of the Soviet Union, and the

Marxist-Lenin philosophy will also be touched upon, as well as information concerning the country's political, economic and social conditions.

Cameron was recommended by state officials to accompany the AASA on this trip.

Itinerary of the journey will include six days in the capital city of Moscow, during which the visitors will tour various educational institutions, and have an opportunity to visit with Russian school administrators.

Following Moscow, the group will travel to Leningrad, where they will stay for four days. Other cities on the trip's schedule include Tbilisi, Erivan, and Kiev, before they must return home.

A lay-over in the Danish capital of Copenhagen is included on both flights to and from the Soviet Union.

Cameron is scheduled to return to the United States on April 19.



Washington Report by Congressman MARVIN L. ESCH

Despite its importance to the national economy, the American farmer receives little public attention. Financially, he has just gone through two bad years, and farm jobs disappear at the rate of 200,000 annually. The farmer provides America with an abundant and cheap food supply, but ends up being penalized for his productivity.

It is the American farmer who made our country the best fed for less. American housewives buy their groceries for 65 percent of disposable income. Other nations pay up to 50 percent. But, look what's happened to the farmer. 1948 net farm income was \$16 billion. In 1969 it was the same. Yet, farm investments since 1948 have more than doubled. The American farmer would need approximately \$45 billion net income before taxes to have the purchasing power he had in 1948.

He has not and still does not get his fair share of American prosperity.

For too long we have separated urban from rural America, in our programs, in our actions and in our attitudes. In our fixation with urban problems we have forgotten the interrelationship and interdependency between the two.

Urban America could not exist were it not for rural America, which supplies food, clothing and other basics. Conversely, rural America depends on our great cities for so much. It is here that rural America makes most major purchases, like trucks, cars, tractors, and other farm equipment.

Not only are the economies of both tied together, but so are other problems. As rural America atrophies and people leave the farm, they migrate to the city adding to the already overcrowded schools, and creating additional burdens in housing and other services.

One dimension to the problem is farm income, but another equally important dimension is the need to improve community services in rural areas to provide better transportation, more doctors, better access to markets, and increased opportunities for small business. I am convinced that one of the best recuperative medicines to re-

store a high quality of life to rural America is revenue sharing. The President has just announced \$100 million more in special revenue sharing, bringing the total to \$1.1 billion for rural community development. This is a 24 percent boost over what rural America received in categorical grants last year. In addition, rural areas will benefit greatly from other special revenue sharing proposals such as manpower, education, transportation, law enforcement, and from general revenue sharing.

I am aware of the apprehension over the proposal to merge the Agriculture Department under a plan to re-structure American government. I for one intend to study this most carefully. My overriding concern will be, are we downgrading Agriculture? At this critical juncture, Congress must take steps to upgrade American agriculture. This is one of the most important tasks of the 92nd Congress. Furthermore, it would be my hope that in the future our agriculture policies emphasize the needs of the farmer rather than consumerism.

The farm problem is not one of the mere statistics or commodities, it is one of people. It is high time we make certain that the farmer gets a better break. We cannot accept the present trend that sees the farmer drive down prices, while he is being driven from the land.

The whole farm problem, and the difficulties of rural America, must be reexamined. Most of this nation's historic battles were fought in the countryside. What better place than to salvage the American dream?

Dairy Day Slated at Rural Activity Center

Dairy Day, an activity sponsored by the Co-operative Extension Service, of the U. S. Department of Agriculture, will be held today, March 18, from 9 a.m. until 4 p.m. in the Rural Activities Center on Saline-Runn Arbor Rd.

The program will feature exhibits by local dealers of dairy products, and equipment. Also, included on the program, will be three presentations on various aspects of dairy farming. The first, "Waste Management," which will be at 10 a.m. will be presented by Dr. J. William Thomas, MSU Dairy Department. Dr. Thomas has traveled extensively observing animal waste problems, and methods of handling wastes. Dr. Thomas feels that waste disposal could become a critical problem in southeast Michigan.

A second lecture, by Dr. Clinton Meadows, dairy specialist, MSU, will concern "Applying Herd Records to Herd Management." Dr. Meadows will dwell on the necessity of good records, and how to use them to better investments. At 1 p.m., Dr. Don Cress, entomology specialist, at MSU, will speak on "Limitations on Use of Pesticides on Dairy Farms." His talk will stress the safe and proper use of pesticides in agriculture. A lunch will be served at the center, for which reservations must have been made by March 15.

A lunch will be served at the center, for which reservations must have been made by March 15.

A lunch will be served at the center, for which reservations must have been made by March 15.

A lunch will be served at the center, for which reservations must have been made by March 15.

A lunch will be served at the center, for which reservations must have been made by March 15.

A lunch will be served at the center, for which reservations must have been made by March 15.

A lunch will be served at the center, for which reservations must have been made by March 15.

A lunch will be served at the center, for which reservations must have been made by March 15.

A lunch will be served at the center, for which reservations must have been made by March 15.

A lunch will be served at the center, for which reservations must have been made by March 15.

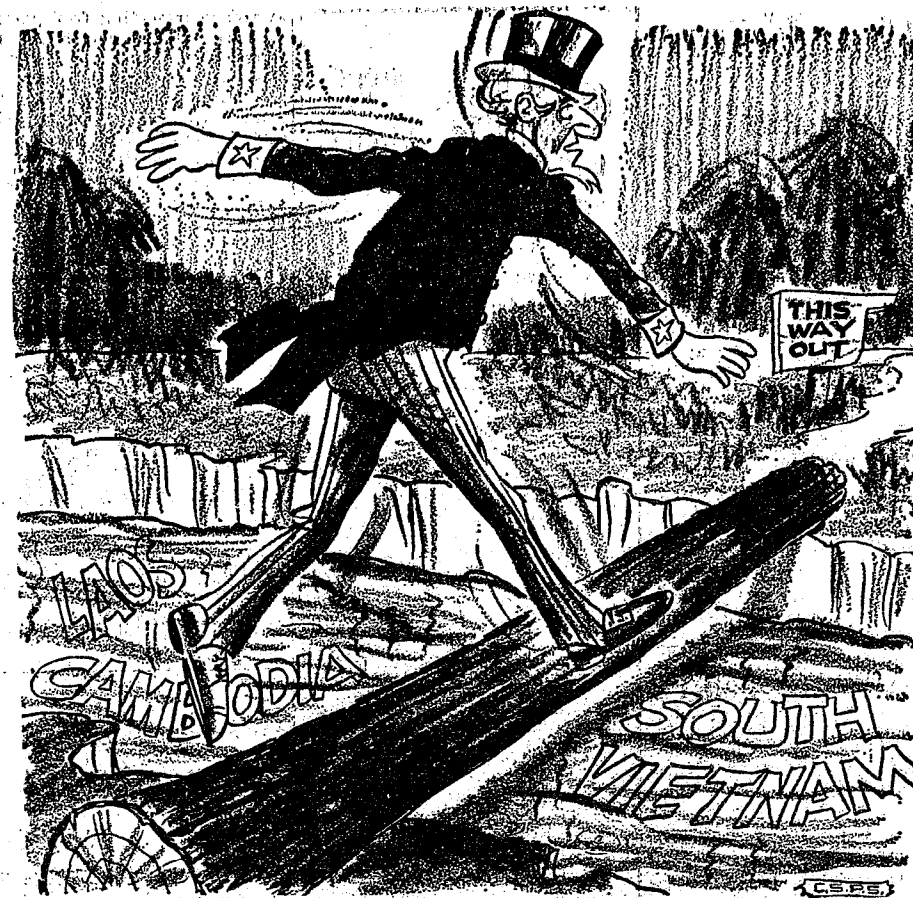
A lunch will be served at the center, for which reservations must have been made by March 15.

A lunch will be served at the center, for which reservations must have been made by March 15.

A lunch will be served at the center, for which reservations must have been made by March 15.

A lunch will be served at the center, for which reservations must have been made by March 15.

A lunch will be served at the center, for which reservations must have been made by March 15.



★ MICHIGAN MIRROR ★

By Elmer E. White, Secretary, Michigan Press Association

Muskie Ahead Here, Too
Democratic party leaders agree that, at the moment, Maine's Sen. Edmund Muskie is the favorite of the party's rank and file for their party's presidential nomination.

But they're quick to add that Muskie shouldn't start counting his eggs, or votes, too quickly.

"When it's still one year before the first primary, no one is assured of anything," was the way one put it. "But at this point it's clear that Muskie is ahead. The question is whether he can stay ahead."

Neal Staebler, a man who's been through many a presidential race, says Muskie's support in Michigan "appears to be as solid as John Kennedy's was at this time." Michigan was one of Kennedy's strong supporters when he won the nomination in 1960.

Party leadership is remaining neutral in the presidential sweepstakes, this early in the game, with two notable exceptions.

The first is Sen. Philip Hart, who announced the night he was re-elected last November that he was supporting Muskie. His support is one of the reasons for Muskie's heavy showing in the state right now.

The other exception is Mrs. Patti Knox, the former state vice chairman of the party, who is national co-chairman of the committee backing Iowa Sen. Harold E. Hughes.

Mrs. Knox concedes that Muskie is ahead right now, but she feels in the time between now and the convention Hughes can convince enough people of his strength and qualifications to turn the tide.

And House Speaker William A. Ryan sees difficulty for any attempt to over-take Muskie either in Michigan or nationally.

"Muskie is well known and if the others expect to challenge him they'll have to do a lot of work," he says. "However, if Ted Kennedy decided to go all

out with all his resources, he'd still be awfully tough to beat."

Staebler says the party leadership will "bring in all the candidates and give them a chance to speak their piece. Then, when the time comes to make a choice, each will have had a fair shot at it."

Michigan's delegates to the national convention will be chosen more than a year from now by a state convention. Between now and then quite a few things could happen. And if the national picture isn't clear cut by then, there will be a lot of attention focused on that convention from all over the country.

Auto Statistics Chilling

Automobile Club of Michigan has reached some frightening conclusions about the drivers operating on the state's highways.

"It is not very comforting to realize that approximately five of every 100 drivers you pass daily on your way to and from work are potential highway killers, who probably wouldn't drive into your driveway, but who might not try very hard to avoid hitting you," it said in a recent report on the state's delinquent motorists.

The report said there are at least 125,000 potential killers on the state's streets and highways and blamed a string of inadequate and improperly enforced state laws for the situation.

Stricter enforcement of present traffic laws and the enactment of new policies are a must if the approximately 125,000 bad drivers that remain on Michigan roads are to be apprehended and rehabilitated," it concluded.

"Special criticism was leveled at the point system which technically calls for disciplinary action against a driver with 12 points but which the report said actually isn't enforced that strictly."

"It is usually not until the second or third time a driver accumulates 12 points that he faces a loss of license, and then for only 30 days," the report said. "Several Department of State officials have stated that suspensions are rare for drivers the first time they reach 12 points in two years."

(Among the recommendations it made to deal with bad drivers were:

- mandatory license suspensions for any driver who compiles 12 points within two years.
- remedial driving instruction when a driver reaches nine points.
- increased points for repeated offenses.

- automatic suspension or revocation of licenses held by drivers called in for three re-examinations in nine years.
- longer jail sentences for drivers caught driving with suspended or revoked licenses.
- more highway patrols, particularly in urban areas, to look out for traffic offenders.

Yours truly,
Uncle Lew.

The first railway west of the Alleghenies was built in Michigan in 1836.

Uncle Lew from Lima Says:

DEAR MISTER EDITOR:

Did you see by the paper where this perffessor is suing his college for firing him cause of his age? The perffessor is 69 year old and wants to work, but the school put him out to pasture. Mister Editor, I hope he wins his case and they have to put him back in harness.

I was thinking about this perffessor Saturday night during the session at the country store. I looked around at the fellers and I realized we're all right along with the perffessor. The only difference is, don't none of us want to hit a dick at a snake, so we're getting pretty much what we want. It ain't fair, seems to me, to have a set up where a feller has got to stop and rock just cause he's been around for a certain number of years.

Ed Doolittle must of read my mind, cause he come up with one of his clippings that told how old business and industry egocentrics is being brought out of retirement on a advising basis to help out their old companies. Ed said it tickled him, cause he allus had heard that what a man needs when he puts in for a job is 40 year experience, and these fellers got it.

Incidental, this perffessor talked about a heap of men in history that done a lot of their great stuff after they passed the 70 mark. I know people slow down when they put on some years, but I agree with the perffessor that you can't just run a man in a computer and figger out how many working days he's got in him. If

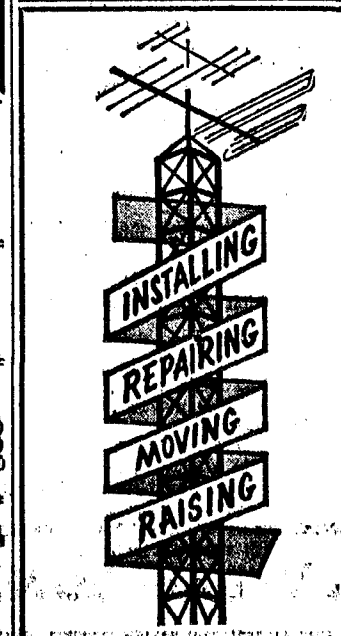
a man wants to work and can do the job, his age ought not to be held agin him, is my feeling.

Practical speaking, Mister Editor, it looks like jest living is going to be a real trick. Bug Hookum, that never smoked regular but used to chew like a beaver, has laid down the no smoking law in the store, and he has the official backing of the feller that runs the store. Bug perffessed as evidence for the perffessor this report that allows second hand smoke will kill you.

Bud said he can see all kind of problems in this ruling, though. If we can outlaw smoking in a tight room on account of our smoke hurting somebody else that breathe the smoke we blow out, what can we do about a barber that has two beers and a bunch of garlick fer dinner, was Bug's question. And what about the women that like to slip off their shoes in church?

Personal, it's still a great old folks that want to work and can't and young folks that can work but won't. We got progress ever minute. I see where this company is offering \$200 a pound for human hair, so a heap of the shaggy younguns can cash in. And I see where this scientist has said some smart feller now can come out with a wild beat to kill weeds.

Yours truly,
Uncle Lew.



ANTENNAS

ARE OUR ONLY BUSINESS

LIVINGSTON ANTENNA SERVICE

COLOR TV ANTENNA SPECIALISTS
★ RESIDENTIAL ★ COMMERCIAL
★ CHANNEL MASTER ANTENNAS & ROTORS
★ LET US PRE-WIRE YOUR NEW HOME FOR TV
★ SELF SUPPORTING TOWERS
★ INSURANCE WORK WELCOME

CALL ANYTIME 475-8783

14700 Jerusalem Rd., Chelsea

JUST REMINISCING

Items Taken from the Files of The Chelsea Standard

4 Years Ago...

Thursday, March 23, 1967—

Several Chelsea High students participated in a district Forensic competition held at the high school on Tuesday, March 21. An assembly was also presented for the student body on Monday. Chelsea High winners were chosen in a contest held last week. Winners of first and second place included Marilyn Miller, Karen Poertner, Linda Farmakis, Linda Merkel, Tom Thomson, Sue Knickerbocker, Carolyn Schwiager, Debbie Kuhl, Kathy Fulk, Ron Bolinger, Kim Flintoft, Jim Boylan, Bill Dehn, Roger Frisinger, and Paul Lancaster. (Approximately 30 Chelsea High students entered the competition.)

"Accolade," an annual literary magazine, of Chelsea High school, and "Bulldog Barks," the student newspaper, were honored recently by Columbia University Scholastic Press Association. "Accolade" won a first-place rating in the association's annual newspaper-magazine contest and the newspaper won third-place honors. Both publications are the work of the high school journalism class. Editor of the "Bulldog Barks," is Bruce Spencer, while Tina Lindauer is editor of the "Accolade." Staff members include John McKeighan, and Jan Koengert, while Mrs. Carol Shook is advisor of both publications.

Dr. Kenneth F. Seifert is joining Dr. Wilfred C. Lane at the Lane Animal Hospital this month. Dr. Seifert received his degree as a doctor of veterinary medicine March 12 at Michigan State University.

Chelsea High's track team has been warming for the spring season with a battle against the weather. This year's team numbers 35, including returning lettermen, Steve Slane, Paul Lancaster, Ken Blass, Gary Larson, Bob Dove, Larry Porath, Larry Gaken, Larry Blackwell, and John Bergman. Other members of the team returning from last year include Gary Ellenwood, John Freeman, Lance Burghardt, Doug Weatherwax, Mike Funderburgh, Alan Boyce, Jim Boylan, Howard McCalla, Tom Smith, Tom McGaw, and Keith Kusterer. Newcomers to the squad include Mike Schnadt, and Rich Slane.

Auto Statistics Chilling
Automobile Club of Michigan has reached some frightening conclusions about the drivers operating on the state's highways.

"It is not very comforting to realize that approximately five of every 100 drivers you pass daily on your way to and from work are potential highway killers, who probably wouldn't drive into your driveway, but who might not try very hard to avoid hitting you," it said in a recent report on the state's delinquent motorists.

The report said there are at least 125,000 potential killers on the state's streets and highways and blamed a string of inadequate and improperly enforced state laws for the situation.

Stricter enforcement of present traffic laws and the enactment of new policies are a must if the approximately 125,000 bad drivers that remain on Michigan roads are to be apprehended and rehabilitated," it concluded.

"Special criticism was leveled at the point system which technically calls for disciplinary action against a driver with 12 points but which the report said actually isn't enforced that strictly."

"It is usually not until the second or third time a driver accumulates 12 points that he faces a loss of license, and then for only 30 days," the report said. "Several Department of State officials have stated that suspensions are rare for drivers the first time they reach 12 points in two years."

(Among the recommendations it made to deal with bad drivers were:

- mandatory license suspensions for any driver who compiles 12 points within two years.
- remedial driving instruction when a driver reaches nine points.
- increased points for repeated offenses.

- automatic suspension or revocation of licenses held by drivers called in for three re-examinations in nine years.
- longer jail sentences for drivers caught driving with suspended or revoked licenses.
- more highway patrols, particularly in urban areas, to look out for traffic offenders.

Yours truly,
Uncle Lew.

The first railway west of the Alleghenies was built in Michigan in 1836.

and all newly-elected village officials were sworn into office at the council meeting Monday evening. Leon Shutes, former assessor and the unsuccessful Independent party candidate for village president, was appointed a trustee to fill the vacancy caused by the resignation of Alber to accept the office of president.

Mr. and Mrs. Charles Smith, Jr., and their sons were in East Ann Arbor Sunday for an observance of the 90th birthday of Ferdinand Hochrein. The Smith family completed the family circle of five generations, others present being the elder Hochrein's son and daughter-in-law, Mr. and Mrs. William Hochrein, and his grandson and wife, Mr. and Mrs. Robert Hochrein, all of Chelsea.

24 Years Ago...

Thursday, March 20, 1947—

Mr. and Mrs. Wesley Howes of Milford have purchased the local Gamble Store from Mr. and Mrs. Don Martin, and took possession of the business on Wednesday, Mr. and Mrs. Martin opened the Gamble Store in 1940. They have no plans for the immediate future.

The annual meeting of the Chelsea Businessmen's Association was held in the Municipal Building Tuesday evening. Election of officers was held with the following results: President for the next year will be Walter Harper, while Lloyd Heydlauff is vice-president. James Daniels is secretary, and John A. Glick, treasurer. Trustees for three years in F. W. Merkel.

Mrs. Wallace Wood, Mrs. Frances Alber, Mrs. Joseph Laban, Mrs. Herbert Roy, and Mrs. John O'Hara spent Thursday in Detroit, where they attended the annual day meeting of the National Council of Catholic Women. The meeting and luncheon was held at the Hotel Statler. Mrs. Laban and Mrs. Woods were delegates of St. Mary's Altar Society.

Twenty members of the Young People's league of St. John's church, Rogers Corners, met at the home of Jack Niehaus Wednesday evening for their regular monthly meeting, and a Welcome Home party. Jack has just returned from Germany, where he served the past 12 months as a clerk typist for the Third Army Headquarters. He is on terminal leave until March 31, when he will report to Fort Sheridan, Ill. for his honorable discharge. He is the son of Mr. and Mrs. Henry Niehaus of Rogers Corners.

34 Years Ago...

Thursday, March 18, 1937—

The choir of St. Paul church will present the Easter Cantata, "The Easter Victory," by H. W.

Vandals May Cause Telephone To Be Removed

Lansing—The General Telephone Co. says it will replace the telephone in the southbound Interstate 94 rest area south of Port Huron—"just one more time."

The newly opened rest area, including the public telephone has been the target of vandals for the second time in less than a year. Further damage, the company told the Department of State Highways, would force removal of the phone.

Public phones are placed in all of Michigan's 60 freeway rest areas. Jack Burton, roadside development supervisor for the Highway Department, said motorists depend on the telephone for emergency aid in the event of breakdowns or accidents.

Petrie, at the church March 21. Miss Oleta Seitz will act as accompanist at the console of the organ, and the choir is composed of the following members, sopranos, Katherine Kusterer, Ruth Niehaus, Emma Oesterle, Anne Schneider; altos, Olga Strieter, Mary Schneider, Amanda Koch; tenor, Paul Barbour; bass and director, Paul Niehaus.

A new grocery store, to be known as the Central Market, has been opened by Robert Hall, using the front part of the building occupied by the Loeffler & Son meat market. Hall will sell merchandise of standard quality, and will carry a full line of fresh vegetables. Carl Beutler is employed at the store.

The annual Senior play, "Fast Colors," will be presented in the Chelsea High gym tonight and Friday night. It is a three-act comedy and is under the direction of Miss Josephine Gibson. Harley Prudden and Harrie Bleecker will play the lead roles of "Pep White," and "Steve Black," respectively, and Paul Pielemeier is "Herbert Green." George Prinzig is "Inspector Burke," while Jane McGuffigan is "Mrs. Whitney."

The role of "Violet Clifford," will be played by Muriel Martin, while Doris Rogers will play "Margery Astern." Elsa Bareis is "Ethel Beggs," and Eileen Adam is "Dixie Jones." Ruth Umstead will play "Louise Nevins."

A Diploma For You

NEVER TOO LATE!

WASHTENAW COMMUNITY COLLEGE

NORTH LAKE ORCHARD

H. WEBB, OWNER
13260 N. Territorial Rd. Next to Inverness Golf Course

APPLE DISCOUNT
FINAL CLOSING SALE
Open Saturdays, 10 a.m. to 6 p.m.
and evenings, 4-6.

Come and see fruit in white bldg.
Located on highway — easy to find.

MARKET RATED SUPERIOR
Member of Certified State Farm Markets

Dr. & Mrs. Oscar Sorenson, Rochester, Talk About Electric Heat . . . and how it protects antique furniture in their Wedgwood Museum.



"...electric heat gives us that uniformity that we need."

Days, Nights, Fall, Winter, Spring. Electric heat is always just right for people, too! Send us your name and address. We'll prove it.

Name _____
Address _____
City _____ Zip _____
160 Service Bldg.
2000 Third
Detroit, Mich. 48226
EDISON

Established 1871 The Chelsea Standard Telephone GR 5-3581

Excellence Award by Michigan Press Association
1951-1952-1960-1964-1965-1966
Walter P. Leonard, Editor and Publisher

Published every Thursday morning at 800 North Main Street, Chelsea, Mich. 48118, and second class postage paid at Chelsea, Mich., under the Act of March 3, 1879.

ADDRESS CORRECTION REQUESTED

Subscription Rates (Payable in Advance)
In Michigan: One Year \$4.00, Six Months \$2.25, Single Copies \$.45
Outside Michigan: One Year \$6.00, Six Months \$3.50, Single Copies \$.50

Service men or women, anywhere, 1 year \$4.00

MEMBER NATIONAL ADVERTISING REPRESENTATIVE MICHIGAN NEWSPAPERS, INC.
167 Michigan Ave.
East Lansing, Mich. 48823

Association - Founded 1888

School Board Briefs

At the Board of Education meeting Monday evening, March 15, present were President Irwin; members Koenn, Smith, Haselschwardt, and Storey; Superintendent Cameron; Business Manager Mills; Principals Conklin, Wojcicki, and Benedict.

Guests included Thomas Morrison, Mr. and Mrs. Fred Powell, Leonard Solomon, and Robert Schaefer, Jr.

Meeting was called to order by President Irwin at 8 p.m.

Motion by Haselschwardt, supported by Koenn, to accept the minutes of the March 1 meeting as presented. All ayes.

Motion by Koenn, supported by Storey, to pay general fund bills of \$7,080.00. All ayes.

Motion by Storey, supported by Koenn, to adopt the agenda as amended. All ayes.

Thomas Morrison reported to the Board on the Co-Operative Education program. Presently there are 17 students participating in classroom related employment.

The North school playground was discussed with a visit planned for Tuesday evening.

Motion by Storey, supported by Haselschwardt, to adopt the proposed policy for pregnant students. All ayes.

Motion by Storey, supported by Smith, to adopt the proposed policy for excursions, field trips, and athletic trips. All ayes.

A policy regarding student discipline, suspension, and expulsion

is being prepared for future adoption.

The township supervisors will meet with the board and administrators on March 16.

Leonard Solomon, president of CBA, presented the proposed changes in the Master Contract for teachers. Solomon proposed March 30 as the first meeting date. The board took no action until it has an opportunity to study the proposal.

Motion by Haselschwardt, supported by Koenn, to grant a medical leave to Mrs. Elizabeth Raduazo for the remainder of the semester, such leave to begin March 19. All ayes.

Motion by Haselschwardt, supported by Smith, to administer the drug survey, prepared by University of Michigan School of Social Work, to a random sample of students in grade 7 to 12. All ayes.

The future planning committee will meet as soon as possible to discuss the school facilities and equipment.

President Irwin appointed Herman Koenn to represent the board in a visit to the Sullivan school, and the seventy retarded classes at Zion Lutheran church.

Motion by Koenn, supported by Haselschwardt, to go into executive session at 11 p.m.

Meeting called back to order at 12:30 a.m.

Meeting adjourned at 12:30 a.m.

Chelsea Youths Earn State FFA Degrees

(Continued from page one)

Star State Agribusinessman will named and for the first time, the also be honored. Parents and friends are encouraged to attend any part of the convention activities.

The Chapter's Parliamentary Procedure Demonstration team will be competing in the State Finals to be held at the Thursday morning session. Team members include: chairman, Marty Straub; vice-chairman, Dan Gaunt; secretary, Neil Bollinger; and Mike Bristle, John Stinefelter, and Ted Hinderer.

Ernie Hinderer and Bill Kuschmaul are the official delegates representing the Chelsea chapter at the convention.

Juniors, Rich Egeier and John Stinefelter have assembled an entry for the educational exhibit contest. The theme of their exhibit centers on controlling pollution of the environment.

More than 1,000 members from 178 chapters will receive awards, compete for honors and conduct business of the state association.

John Young, Harbor Beach Chapter, state FFA president, and other officers will conduct the business sessions and other activities. Special awards will be made for the chapter educational exhibits. Agricultural Proficiency Awards presentations will be made.

Keynote speaker for the event will be the talented television personality and former Miss America, Marilyn Van Derbur. National FFA vice-president, Wayne Humphreys, Crawfordville, Ia., will appear on the program. Kenneth Cheatham, American Farmer Bureau Federation, former Star Farmer of America, will be the main speaker for the annual convention banquet Thursday evening.

A special noon luncheon for chapter advisors will be provided by the Michigan Electric Power Suppliers.

The Chelsea chapter will be sending a busload to Michigan State University Thursday, March 25, to take part in the Farmers' Week activities. A special program is being sponsored that day by the college of Agriculture and Natural Resources. The program will include exhibits and mini-films on different careers in Agriculture, Agribusiness and Natural Resources.

Many parents and friends came out to support the slave sale which was held March 11. Thirty-five of the members were auctioned off for a day's labor to area farmers and residents. Proceeds from the sale are financing this trip.

The chapter is currently feeding 101 baby chicks as part of a Poultry Improvement Contest. In this broiler contest, day-old chicks are fed for seven weeks. At the end of that time, the birds are judged in state-wide competition. Such factors as feed efficiency, rate of gain and mortality are taken into account in the final judging. April 1 marks

the last day of the contest. The chapter is shooting for a goal of finished birds with an average live weight of 6 pounds by that date. The birds will be killed and dressed by the vocational agriculture students at the high school on April 2. Advanced orders are being taken by the FFA for these birds. They may be purchased, dressed out, or live. This is the third year the chapter has taken part in the Poultry Improvement contest.

Freshmen Bob Herrst and Dave Klink, and sophomore, Ted Hinderer are running neck and neck in selling Vitality garden seeds. All three boys have sold more than \$130 of garden seeds each with a month to go on the sale. This project has received wide-spread support from local residents.

Don Schrottenboer.

WEBELOS, PACK 445—Webelos of Cub Scout Pack 445 will perform an Indian Devil dance at the high school at their Pack meeting on March 29. Kevin Heller will be the devil, while George Bentley, Jr., will be a happy warrior. Mr. Heller will be the chief. Dennis Thompson will be drummer.

The dance will be performed on the stage at the high school. George Bentley, Jr. scribe.

DEN 1, PACK 415—Den 1, Pack 415 met at the home of their den mother, Mrs. George Atkinson on March 16. The boys made headbands for the Indian ceremony for their March Pack meeting, and finished their Indian costumes.

John Dreiman brought treats. Kenneth Cobb was absent. Meeting closed with the Cub Scout song.

Bryan Herrick, scribe.

DEN 7, PACK 445—Den 7, Pack 445 met Friday, March 12, at the home of Mrs. Carl Reimenschneider. The boys made some drum beaters from sticks to be used with the drums which were made last week.

The boys also learned some Indian dances.

A game, "Western Hospitality," was played. Steve Myers brought treats.

Meeting closed with the Living Circle.

Jeff Parnell, scribe.

Folks who beat around the bush take the road to nowhere.



BOY SCOUT NEWS

TROOP 476—

Thirteen Boy Scouts representing Troop 476 attended the Irons District's third First-Aid Meet contest, Saturday, March 13, at Whitmore Lake High school. Competition was by patrols. Each patrol was given five problems on which they were judged. The three patrols from 476 who attended, all received blue ribbon

swords representing first place. Those who attended the meet were Pete Pitzer, Dan Cobb, Don Oesterle, Bob Burgess, Dave Welzel, Jim Stahl, Ron Kiel, Pete Stahl, Dave Heydlauff, Tony Hafner, Steve Schanz, Dennis Cosgrove, and Lee Hafner.

Adults were William and Lloyd Hafner, assistant scoutmasters; Peter Pitzer, Sr., committeeman; and Charles Burgess.

TROOP 425—

Five tenderfoot scouts, and one second class scout of Boy Scout Troop 425 attended the First-Aid Meet held at Whitmore Lake on Saturday, March 13. They received a second place rating for their efforts.

At their meeting of Monday evening, March 15, the boys discussed the camp-out which the

troop will hold this coming weekend. They also discussed other upcoming camp-outs, and summer camp.

Scoutmaster Jim Branham asked for volunteers to sell tickets for Scout-O-Rama slated next month. Jerry Milliken, scribe.

VALUABLE COUPON

SPRINGTIME SAVINGS

SAVE 50c

On 8-Pound Load of Dry-Cleaning

Reg. \$3.00 Per Load

Now With This Coupon **\$2.50** Per Load

Cleaning Done For You By Attendant On Duty

WESTGATE LAUNDROMAT

Westgate Shopping Center—Ann Arbor, Mich.
Pick Up & Delivery Available. Call 668-9024.

7 AM - 10 PM
OPEN 7 DAYS A WEEK
PHONE 475-5701

Jiffy market

BIG ENOUGH TO SERVE YOU.....SMALL ENOUGH TO KNOW YOU!

Corner of SIBLEY & WERKNER RDS....CHELSEA, MICHIGAN

SALE PRICES EFFECTIVE WEDNESDAY, MARCH 18, THRU SUNDAY, MARCH 21, 1971.

PORK LOIN SALE

YOUNG - LEAN - TENDER

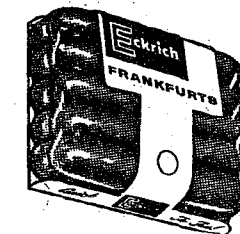
WHOLE LOIN
12-Lb. Avg.

59^c lb.

Sliced
Freezer Wrapped Quick Frozen At No Charge

ECKRICH ALL-MEAT

FRANKS
12-Oz. Pkg. **59^c lb.**



HOLSUM ENRICHED

HOT DOG SOF BUNS
8 pack **29^c**

PEPSI-COLA

MOUNTAIN DEW - NU-GRAPE - PATIO ORANGE

Your Choice of Four Favorites

6 pack 69^c

12-Oz. Throwaway Cans

MA BROWN
STRAWBERRY PRESERVES
10-Oz. Jar **19^c**

VAN CAMP'S
VIENNA SAUSAGE
4-Oz. Can **23^c**

TOOTHPASTE
COLGATE or CREST
Large 3.25 Oz. Tube **49^c**

Cigarettes
Your Favorites **35^c pkg.**

MICHIGAN POTATOES

U. S. No. 1

10-lb. bag 49^c 20-lb. bag 89^c

BORDEN JUMBO TREAT

ONE GALLON

VANILLA ICE CREAM

99^c

HERSHEY'S CHOCOLATE SYRUP, 1-lb. can 19c

MARATHON GAS PUMPS

Reg. **29⁹** Premium **34⁹**

Incl. All Taxes

While the pumps last!

OPEN DAILY and SUNDAY 7 a.m. to 10 p.m.

SPECIALS

12-OZ. CANS
PEPSI-COLA . . 6 for 49c
With 4 Pages Pantry Stamps

8-COUNT PKG. SCHAFER
IRISH MUFFINS, 2 for 67c

OPEN 6 A.M. TILL 11 P.M. EVERY DAY

GALLUP - SILKWORTH PUMP & PANTRY

295 S. Main St., Chelsea

Phone 475-7051

72 HOUR SALE TIRES

3 DAYS ONLY

Thurs., Fri., Sat., March 18, 19, 20

PRICES CUT

SAVE NOW THRU WED. NIGHT

Our BEST SELLING 4-Ply Nylon Cord tire

"All-Weather IV" Blackwall

• Clean sidewall design, radial darts on shoulder • Triple-tempered nylon cord construction • Buy now at these low prices

LAGER SIZES - ONE LOW PRICE

7.75 x 14 **\$15.95**
8.25 x 14 **\$15.95**
BLACKWALL TUBELESS

Add \$3.00 for Whitewalls

GOODYEAR - THE ONLY MAKER OF POLYGLASS[®] TIRES

CHELSEA MARATHON

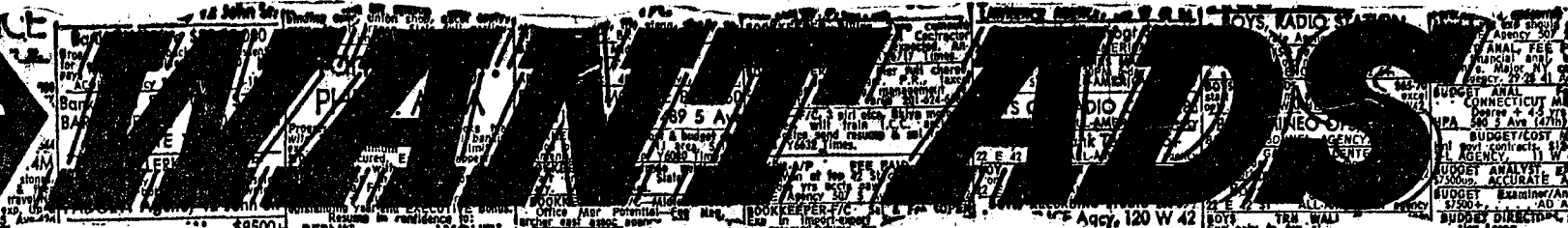
930 S. Main St.

Phone 475-2804

Chelsea, Mich.

Ads
Taken
Till 5 p.m.
Tuesday

IT'S EASY TO BUY-SELL-RENT- HIRE & FIND WITH



Just
Call
GR 5-3581

WANT ADS

The Chelsea Standard

WANT AD RATES
PAID IN ADVANCE—All regular advertisements, 50 cents for 25 words or less, each insertion. Count each figure as a word. For more than 25 words add 2 cents per word for each insertion. "Blind" ads or box number ads, 85c extra per insertion.
CHARGE RATES—Same as cash in advance, with 15 cents bookkeeping charge if not paid before 5 p.m. Tuesday preceding publication. Pay in advance, send cash or stamps and save 15 cents.
DISPLAY WANT ADS—Rate, \$1.10 per column inch single column width only. 8-point and 14-point light type only. No borders or boldface type.
CARDS OF THANKS or MEMORIALS—Single paragraph style, \$1.00 per insertion for 50 words or less; 2 cents per word beyond 50 words. Minimum, 1 inch.
COPY DEADLINE—5 p.m. Tuesday week of publication.

WANTED
TYPIST
Accurate, 55-60 wpm.
Apply in Person
Chelsea Standard
300 N. Main St. Ph. GR 5-3581

ALLSTATE
INSURANCE
AUTO - BOAT - COMMERCIAL
LIFE - HEALTH - HOME
Phone Even, or Week-ends for
N. H. MILES, Agent
GR 5-8334

FOR SALE—1968 Z-28 Camaro, many extras. \$1400 or best offer. Ph. 475-8989. 39

SHOES
See what's new
for Spring
at
DANCER'S

FOR SALE—Tappan bottle gas stove, knitting machine, heavy duty Singer sewing machine. Ph. 475-8446. 39

Hearthside Yarn Shop
5450 Conway Road
Yarns, needles, accessories
Free instructions in knitting and crocheting with follow-up assistance.
Orders taken for hand-made items.
Ph. 475-2014

LOCAL FAMILY desperately needs to rent country home in Chelsea School District. Also small acreage to buy in Chelsea School District. Good references. Phone 475-7354 or 475-7351. 38tf

AVAILABLE to do spring cleaning and house cleaning jobs of any kind, with car and references. Ph. 475-2898. 39



BECKER
MEMORIALS
6033 Jackson Road
ANN ARBOR, MICHIGAN

*Your
Confidence*
... base it
on our long record
of personal service.

Staffan Funeral Home
"Funeral Directors for Four Generations"
124 PARK STREET PHONE GR 5-4417

WANT ADS

BOARDING, trimming, training. Town and Country Kennels, Jackson Rd. at Baker. NO 3-7200. 7tf

Gem Travel Trailers

and Campers
PICK UP COVERS
4" ————— \$100.00
26" ————— \$179.00 and up
Triangle Sales
Chelsea 475-4302 40tf

PATCHING and PLASTERING.
Call 475-7489. 33tf

CLOGGED SEWER

Reynolds Sewer Service
We Clean Sewers Without Digging
Drains, Cleaned Electrically
FREE ESTIMATES
2-YEAR GUARANTEE
Phone Ann Arbor NO 2-5277
"Sewer Cleaning Is Our Business—
Not a Sideline." 33tf

SEE US for transit mixed concrete. Klumpp Bros. Gravel Co. Phone Chelsea 475-2630, 4920 Loveland Rd., Grass Lake, Mich. x40tf

FOR REAL DOLLAR SAVINGS
be sure and see us before you buy any new or used car. Palmer Motor Sales, Inc. Your Ford Dealer for over 50 years. 2tf

CAR & TRUCK LEASING. For details see Lyle Christwell at Palmer Motor Sales, GR 5-3271. 49tf

WANT TO BUY—1 or 2, or more wooded acres joining state land in Chelsea area. For trailer site for retired couple. Call Southgate, Mich. 285-6647. -41

USED CARS

'71 Pinto 2-dr.
'70 Ford 4-dr.
'70 Mustang Fastback
'69 LTD 2-dr. Hardtop. air
'68 Chev 2-dr. Hardtop
'68 Galaxie 500 2-dr. hardtop
'68 Falcon 2-dr.
'67 Camaro 2-dr. Hardtop
'67 Ford wagon. Factory air.
'66 Buick 2-dr. hardtop
'66 Galaxie 500 4-dr.
'65 Galaxie 500 2-dr. hardtop
'65 Corvair 2-dr.
'63 Ford convertible

TRUCKS

'68 Ford 1/2 ton
'67 Ford 1/2 ton (3)
'67 Chevrolet 1/2 ton
'65 Ford 1/2 ton

PALMER FORD

Open Mon., Wed., Thurs., Till 9:00
Chelsea GR 5-3271 x38tf

FOR SALE

1964 Chevrolet Corvair Greenbrier, 8-passenger van.
1966 Chevrolet Sportvan deluxe, 8-passenger.
Low mileage on both.
May be seen at
Chelsea United Methodist Home
805 W. Middle St.
Chelsea, Mich. Ph. 475-8633
Contact either Mr. Johnson or Mr. Allen 40

KNAPP SHOES

For Cushion Comfort
Robert Robbins
475-7282 48tf

WANT ADS

ROBERT PATRICK for home improvement, building and maintenance. Ph. 475-7460. 45tf

HAMMOND ORGAN teachers wanted to teach in their own homes. Call Grinnell Brothers, Ann Arbor, 662-6667. 34tf

CALL FRANK for all your carpet cleaning jobs, morning or week-end. Needs only 3 hours to dry. Only 10c per square foot. Phone now for free estimate, 761-4328. All work guaranteed. 33tf

REDUCE EXCESS fluids with Fluidex, \$1.69. Lose weight safely with Dex-A-Diet. At Chelsea Drug. -45

PIANO TUNING. Chelsea and area. Facilities for reconditioning and rebuilding. Used piano sales; reconditioned grands and verticals. E. Eklund. 426-4429. x50tf

Contractor Servicing Chelsea, Dexter and Manchester Areas

Complete Home Remodeling
Inside and Outside
Specializing in extra living space, recreation rooms, kitchens and paneling. Installing all aluminum products, 5" eavestroughs, custom-made awnings, windows and doors, aluminum siding in many selected colors and styles.
Please Call
DALE COOK
Chelsea 475-8863 20tf

**COMPLETE SANITATION SERV-
ICE**—Septic tanks cleaned and repaired. Licensed and bonded. Call anytime. Munith (517) 596-2948 or (517) 596-2116. -48

SEE THE UNIVERSITY of Detroit Chorus, featuring the Singing Titans, presented by Dexter Council K. of C. and St. Joseph's Catholic Church Saturday evening, March 27, 1971 at Dexter High School, 2615 Baker Rd., Dexter, at 8:30 p.m. x40

PERSONAL INCOME TAX service. Phone 475-2210 anytime. -41

REAL ESTATE

49 VACANT ACRES, rolling, many trees. Near Chelsea. Land contract available.

10 ACRES, good building site, on black-top road. 1 mile from Chelsea.

NEW 2-BEDROOM brick ranch. Full ceiling, 2 fireplaces, 55 high rolling acres, on Dexter Trail.

WANT SECLUSION? 2-acre island on Watson Lake with house. Call for new low price.

4-BEDROOM older farmhouse on 1 acre. Oil heat, nice yard, garage. FHA approved. Dexter schools.

91 ACRES, 5-bedroom farmhouse, 1/2 mile road frontage, pine trees. Near M-36. Pinckney schools.

CITY OF WEBBERVILLE—4-bedroom home, excellent condition, house, garage and small barn on 2 acres.

Howell Town & Country, Inc.
Local Representative
CARLIE WIEDMAN
Phone 426-3758 39

BUMPER POOL TABLE for sale. Phone 475-7362. -x39

PUBLIC SPRING Salad Luncheon at the Congregational church, March 24, 11 a.m. to 1:30 p.m. Men's dining room, bake sale, nursery. Tickets available from members, Patty Ann Shoppe, or Murphy's Barber Shop. Donations, \$1.50. -39

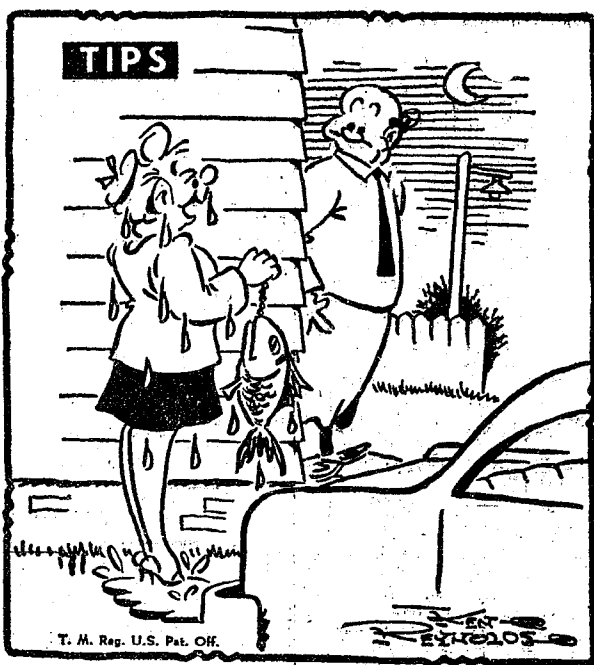
Al's Radio & Tv
Service on all makes.
Phone 475-8545
549 N. Main, Chelsea -39

'APPLIANCES

DELUXE 30" Frigidaire electric range, used ————— \$75
RADIO-PHONO combination, used, ————— \$79.95
NEW 20" apt. size gas range, ————— \$99.95
SUNBEAM HUMIDIFIER—Close-out, \$89.95 value for only \$75
210-LB. REVCO chest freezer for only \$148.

HEYDLAUFF'S
(Formerly Frigid Products)
113 N. Main. Ph. GR 9-6051 39

ELECTROLUX
VACUUM
CLEANERS
SALES and SERVICE
JAMES COX
Ph. 428-2981 or 428-2821
Manchester



"Guess what that car we got in the Standard Want Ads and I hit down by the bridge?"

WANT ADS

EXPERIENCED PAINTER looking for part-time work, interior or exterior. Reasonable rates, free estimates. Phone 475-7678. 32tf

FOR SALE
40 ACRES, \$500 per acre.
TWO 10-ACRE building lots, at \$600 per acre.

HAVE BUYERS for farms and Chelsea homes.
NO RENTALS
R. D. Miller
REAL ESTATE
Real Estate Broker
475-7311
15775 Cavanaugh Lake Rd.
Chelsea, Mich.
Post Office Box 381
List your property with Miller—fast, efficient service. 24tf

Real Estate For Sale
NEW LISTING—3-bedroom home, 14 years old. Located in the southwest part of Chelsea. Ideal for a small family or a retired couple. Easy to finance, \$19,900.

OWNER ANXIOUS TO SELL—Needs work but can be bought on low down payment. 4 bedrooms, full basement, gas heat, 2-car garage. Near downtown. Price reduced to \$13,000.

7 1/2 ACRES—All inside village limits. Has 3-bedroom house, garage, 745 feet of railroad frontage. \$30,000. Terms.

BUILDING LOT—One mile east on Old US-12, 135 feet of frontage. 1 1/4 acres. \$4000.

10 ACRE LOTS—Several to choose from. 2 1/2 miles out. From \$7,500 up.

CLARENCE WOOD
BROKER
646 Flanders St.
Phone 475-2038 38tf

SIGNS PAINTED. Phone 475-8363. 34tf

NEW LUGGAGE
Good selection
at
DANCER'S 39

Real Estate
For Sale
55 ACRES on blacktop road.
LISTINGS NEEDED
Call
Kern Real Estate
Phone 475-8563 -39tf

WORK SHOE
HEADQUARTERS
Famous Red Wing Brand
\$12.95 to \$26.95
Foster's Men's Wear 34tf

FOR SALE—One produce case, one double deck milk case cheap. You move. Dexter Bakery. -x40

NEW
SPRING SHIRTS
Long and
short sleeve
New patterns
for spring
at
DANCER'S 39

FARM
80-ACRES, completely fenced, 3-bedroom home, pond, good useable barns, black-top road, 1 1/2 miles from Dexter.

Robert H. Thornton Jr.
REALTOR
U. of M. Certificate in Real Estate
105 N. Main St., Chelsea
475-8629, eve. 475-8857 x38tf

WORK SHOE
HEADQUARTERS
Famous Red Wing Brand
\$12.95 to \$26.95
Foster's Men's Wear 34tf

Eibler, Frisinger & St. Amour
REALTORS
Chelsea 475-8681 Dexter 426-4659
Evenings Call
Paul Frisinger 475-2621
Herman Koenn 475-2613
George Frisinger 479-4161
Lillian Krull 426-4585 38tf

FOR RENT—Small basement store or office space. Approximately 450 sq. ft. Private outside entrance. Located on Main St. in Chelsea. 475-5541. -x39

FREE TO GOOD HOME—3-month-old German shepherd, female, house broken. Family moving. Call 475-7304. 39

G. G. HOPPER
Building Contractors
Phone GR 5-5581
Gregory 498-2148 40tf

VACUUM CLEANERS—Electrolux, authorized sales and service. James Cox, Manchester. Ph. 428-2981 or 428-2821. 48tf

And Away You Go . . .
for miles of smooth
motoring after you
fill up with our
PURE gas and oils.
One stop here keeps you going safely, surely. Try our speedy, friendly, competent service. You'll come back again and again!

PURE OIL PRODUCTS
JIM'S PURE SERVICE
Tires — Batteries — Tune-Ups — Brake Service — Wheel Alignment
PHONE 475-2822 501 SOUTH MAIN

WANT ADS

EXCELLENT, efficient and economical, that's Blue Lustre carpet and upholstery cleaner. Rent electric shampooer \$1. Dancer's, Chelsea. 39

REAL ESTATE

Farms, acreage, city and country homes and lake properties.

Mary Walter
Real Estate
7421 Dexter-Pinckney Rd.
Dexter 426-9188

HENRY BUSS
Res. 475-8910
Office — Evenings and Sunday
Phone 475-8608 36tf

FOR SALE—Trailers, 8x10, steel plated with stake pockets, complete with racks. 7.50x20 inch 8-ply tires. Capacity — tons. 7 1/2x3 1/2 complete with racks, steel floor. Ideal for vacations. Capacity 3,000 lbs. Fireplace wood. 2-year seasoned, oak and hickory hardwood. 4x8x18". Phone 475-7729. -18

Custom Kitchen Cabinets

and
Formica Tops
Made to Order
475-2857 32tf

For Low Cost
Floor Covering
We have small and large pieces, ends of rolls, etc., of linoleum and carpeting at close-out prices.
Many sizes and colors to select from.
MERKEL BROS. x40tf

Chelsea Area Homes
and Farms

CHELSEA—3-bedroom ranch home, finished basement, recreation room, excellent location near schools. 2-car garage.

CHELSEA—No streets to cross to Elementary school. 3-bedroom ranch home on quiet court, large back yard, finished recreation room.

80-ACRE FARM—2 miles south of I-94, 30 minutes west of Ann Arbor. Early American remodeled farm home, immaculate condition. Large modern kitchen, dining room, living room, 2 1/2 bedrooms, study, large barn in good condition. Priced to sell, \$69,900.

NEW CAPE COD HOME—5 acres, horse barn, 4 or 5 bedrooms, quality built, all thermo-pane windows, central air conditioning, electronic air filter, family room, fireplace, dining room, 2 1/2 baths, 2-car attached garage, 4 miles south of I-94.

4 BEDROOM HOME, Chelsea—2 full baths, deep lot, new wiring. Priced to sell at \$24,500.

3-ACRE COUNTRY HOME—Fireplace, dining room, remodeled bath and kitchen, 3-car attached garage, 1 mile north of Chelsea. Hill-top setting.

5-ACRE EARLY AMERICAN—Renovated farm home on 5 acres with barns, 5 bedrooms, new furnace, new plumbing, new wiring, Chelsea schools.

LARGE FAMILY HOME—6 bedrooms, 10 years old, excellent location for schools, 4,000 sq. ft. Only \$39,900.

PATTERSON LAKE—Quality year-round home on Patterson Lake. Fireplace, 2 bedrooms, family room, carpeted throughout. Immaculate condition.

MANY BUILDING SITES to choose from. Excellent site in Chelsea near High School and Jr. High. Secluded 10-acre building sites, some with stream and woods.

71 ACRES, with 4-bedroom home, horse barn with 8 box stalls, stream and woods, ideal for horses. Near Wolf Lake. \$26,500.

10 ACRES north of Grass Lake. 2-bedroom farm home partially remodeled, rolling land, with many trees. \$20,000.

LAKEFRONT HOME, Big Portage Lake, 3-bedroom, large living room with fireplace, built-in kitchen. Immediate occupancy, \$12,800 on leased land.

NEAR I-94, west of Grass Lake, nearly new, fully carpeted, 3-bedroom rancher with full basement. One-car attached garage. \$21,000.

Willis Real Estate
(517) 522-8121 or (517) 764-1416, or local 663-9160. 39

Men Needed To Train
As Semi Drivers
Train now to drive semi tractor trailers, local and over the road. You can earn high wages after short training. For application and interview, call 419-243-4058, or write Safety Dept., United Systems, Inc., c/o Terminal Bldg., 215 City Park Avenue, Toledo, Ohio 43602. Training will be on the actual equipment. 40

YARD GOODS
ZIPPERS
THREAD
NOTIONS
Big selection
at
DANCER'S
BASEMENT 39

CUSTOM BUILDING
and
REMODELING
Chelsea Associated Builders, Inc.
Phone 475-8182 38tf

CAR RENTAL by the day, week-end, week or month. Full insurance coverage, low rates. Call Lyle Christwell at Palmer Motor Sales, GR 5-3271. 25tf

WANTED TO RENT—Four- or five-bedroom home in country or on large piece of ground. Call 663-2157. -x37

FOR SALE—Purebred German Shepherd puppies, 3 months old, \$35. Phone 475-7336. -39

PUBLIC SPRING Salad Luncheon at the Congregational church, March 24, 11 a.m. to 1:30 p.m. Men's dining room, bake sale, nursery. Tickets available from members, Patty Ann Shoppe, or Murphy's Barber Shop. Donations, \$1.50. -39

JUST ARRIVED!
Imported Tuberous
Begonia Bulbs
Start them now for early blooms.
Chelsea Hardware
Ph. GR 9-6311 39

Harper Pontiac Sales & Service
Chelsea
Phone 475-5311 or 475-5451 days, 761-2999 evenings.
Open evenings by appointment. 39tf

FOR SALE—Elmer Below property, at 2987 S. Fletcher Rd., Chelsea. Must be sold to settle estate. Phone 428-8652. x37tf

TREE REMOVAL DONE—Also buyers of standing timber and walnut trees. Chelsea 475-7631. 34tf

ALUMINUM SIDING, custom trim, and gutters. Dave's Siding Co. Phone 498-2423. 15tf

FOR SALE—Spray material, and apple crates. Czapl's Orchard, 1817 Rank Rd., GR 9-6468. -x39

WANT ADS

PROMPT TREE REMOVAL, toppling and cabling. Free estimates, fully insured. Phone 475-8035. -x2

REAL ESTATE

21.3 ACRES, with 4-bedroom home, horse barn with 8 box stalls, stream and woods, ideal for horses. Near Wolf Lake. \$26,500.

10 ACRES north of Grass Lake. 2-bedroom farm home partially remodeled, rolling land, with many trees. \$20,000.

LAKEFRONT HOME, Big Portage Lake, 3-bedroom, large living room with fireplace, built-in kitchen. Immediate occupancy, \$12,800 on leased land.

NEAR I-94, west of Grass Lake, nearly new, fully carpeted, 3-bedroom rancher with full basement. One-car attached garage. \$21,000.

Willis Real Estate
(517) 522-8121 or (517) 764-1416, or local 663-9160. 39

Men Needed To Train
As Semi Drivers
Train now to drive semi tractor trailers, local and over the road. You can earn high wages after short training. For application and interview, call 419-243-4058, or write Safety Dept., United Systems, Inc., c/o Terminal Bldg., 215 City Park Avenue, Toledo, Ohio 43602. Training will be on the actual equipment. 40

YARD GOODS
ZIPPERS
THREAD
NOTIONS
Big selection
at
DANCER'S
BASEMENT 39

CUSTOM BUILDING
and
REMODELING
Chelsea Associated Builders, Inc.
Phone 475-8182 38tf

CAR RENTAL by the day, week-end, week or month. Full insurance coverage, low rates. Call Lyle Christwell at Palmer Motor Sales, GR 5-3271. 25tf

WANTED TO RENT—Four- or five-bedroom home in country or on large piece of ground. Call 663-2157. -x37

FOR SALE—Purebred German Shepherd puppies, 3 months old, \$35. Phone 475-7336. -39

PUBLIC SPRING Salad Luncheon at the Congregational church, March 24, 11 a.m. to 1:30 p.m. Men's dining room, bake sale, nursery. Tickets available from members, Patty Ann Shoppe, or Murphy's Barber Shop. Donations, \$1.50. -39

JUST ARRIVED!
Imported Tuberous
Begonia Bulbs
Start them now for early blooms.
Chelsea Hardware
Ph. GR 9-6311 39

Harper Pontiac Sales & Service
Chelsea
Phone 475-5311 or 475-5451 days, 761-2999 evenings.
Open evenings by appointment. 39tf

FOR SALE—Elmer Below property, at 2987 S. Fletcher Rd., Chelsea. Must be sold to settle estate. Phone 4

WANT ADS

FOR SALE—Formica top, 5-piece kitchen set, \$40; 2 end tables and coffee table, \$15; 3-piece bedroom set with matching spring and mattress, \$150; 2-piece living room set, \$30; tilt-back chair, \$40. See manager, 533 N. Main. x39

FOR SALE—1966 Olds F-85 deluxe 2-dr., V-8 engine, automatic transmission, power steering, white with red interior. Very good condition. Call 475-2321 after 6 p.m. x39

FOR SALE—Spinet piano, Early American cedar chest, milk stool, and Early American hutch. Call 475-8055. x39

SPRING CLEANING—Need some work done at your house? Yard clean-up, raking, painting, car washed—your name it. Baptist Church Youth are earning money for a spring banquet. Satisfaction guaranteed. Call 475-8323. x43

CHILDREN'S ART CLASSES, Chelsea Art Center. Register now, for classes starting Wednesday, April 7. Phone 475-2903. Quality picture framing, weekly service. Chelsea Art Center. x39

Washtenaw Community College
ALL CLASSES ON NEW HURON CAMPUS

WANT ADS

CUSTOM BUTCHERING, and meat processing. Best only. Best for sale by the side. Service Meat Processing, Manchester, Michigan. Phone 425-8530. x46

CHILD CARE in my licensed home, weekdays. 475-2760. x40

DO YOU NEED masonry work done? Phone Ken Young, 428-3342. Basement laid for 50¢ per block. Free estimates on brick work and fireplaces. x39

TIRES, TIRES, TIRES—Sold my business, have Firestone, Good-year, Shell Oil Co. brands in stock. Excellent bargains. Will deliver. Call anytime, United Oil Company, Chelsea 475-7343. x40

WANTED—Canning jars, pump organ, floor tom, pre-recorded open reel tapes, wheelbarrow, fluorescent lights. Phone 475-7493. x39

PARTY DESIRES to rent farm, Phone 761-6980. x40

FOR SALE—General Electric refrigerator freezer. In excellent condition. Phone 475-5351. x39

WANTED TO SUBLET, home or apartment during summer months beginning April or May. Have children ages 8-14. Phone 426-8572. x39

THANK YOU
I would like to thank all my relatives, for the pretty flowers, and all good care they gave Mr. Reed, while I was in the hospital, the VFW for their lovely plant and card, and for all the nurses and the aides that were so good to me, and a special thanks to Dr. sea Community Hospital in Chelsea. (Mrs. Frank Reed.)

THANK YOU
I wish to thank our Chelsea friends and neighbors for the flowers and cards that were sent to us at the time of my father's death. Mr. and Mrs. Herbert Paul. Mr. and Mrs. Arthur Paul. x39

THANK YOU
I wish to thank all my friends, and relatives for cards, visits, and flowers during my stay in the hospital. And a special thanks to my mother and Mr. and Mrs. Cecil Clouse, for their help. Mrs. Bertha Hafner.

ANNA M. WERNER
(We wish to extend our heartfelt thanks and appreciation for the many acts of kindness, messages of sympathy, spiritual bouquets and beautiful floral offerings received from our friends, neighbors and relatives during our recent bereavement in the loss of our mother. We especially want to thank Dr. Fisher and Dr. Krause for their kindnesses during Mom's many illnesses and to the Rev. Fr. Wahowiak for his beautiful words of comfort. William F. Werner. Ruth-Marie Lyons. Paul D. Werner.)

THANK YOU
I wish to thank my relatives and all my friends for their kindness and many good wishes while I was in the hospital, and since my return home. Sincerely, Margaret Dietle.

THANK YOU
I want to thank my many friends who remembered me while I was in the hospital. Your cards, flowers, and fruit will always be remembered. Many thanks to the Rev. Fr. Wahowiak, Boy Scout Troop 476, and the Webelos Pack 455. It makes one feel good, just to know so many nice people. Otis Titus.

THANK YOU
I wish to express my thanks to my friends, relatives and neighbors for their flowers, cards, gifts and messages and for their helpfulness in looking after my home while I was in the hospital and since my return. Thanks, also, to the present and former area pastors, in addition to my own pastor, the Rev. Warner Siebert, who came to visit me. The thoughtful kindnesses extended at this time are very much appreciated. Sincerely, Emma J. Oesterle.

THANK YOU
I would like to thank the North Lake Methodist church for the beautiful flowers which they brought me yesterday. It was very much appreciated. Frank Reed.

Telephone Your Club News To GR 5-3581

MID-STATE FINANCE CORP.
\$25 to \$1,000
For Any Worthwhile Purpose
See or Call
FRANK HILL
at 475-8631
111 PARK STREET
CHELSEA, MICH.

School Board Studies Student Conduct Code

Chelsea's Board of Education has announced that the State Board of Education has requested that all boards of education across the state adopt, or be in the process of adopting a code of student conduct by April 1.

In a resolution adopted by the State Board on Dec. 9, the board stated: "That school districts be required by April 1, 1971, to notify the State Board of Education that the local board of education has adopted, or is adopting, a Code of Student Conduct, which code identifies categories of misconduct, defines the conditions under which students may be suspended or expelled, and specifies the procedural due process safeguard which will be utilized in the implementation of the locally adopted student conduct codes."

Printed in this issue of The Standard is the text of the policy which has been followed by the school district the past few years, with minor exceptions. The policy will be considered for adoption by the board of education on or shortly after April 1.

POLICIES ON SUSPENSION AND EXPULSION

The primary objective of student discipline and control is to produce a school environment in which complete attention may be directed to the teaching-learning activities. Discipline may be defined as the control of conduct by the individual himself or by external authority. It includes the entire program of adapting the individual child to life in his society and involves two major emphases:

1. To guide the pupil so that he enhances the immediate efforts of teachers and other pupils in the learning situation, and, therefore, does not threaten either the classroom or the instruction which is taking place.

2. To assist the pupil in becoming a responsible, productive and self-disciplined citizen within the school, in preparation for assuming his adult responsibilities. At least by the time he reaches high school age, it is expected that the pupil will assume personal responsibility for his own behavior.

The school system has a responsibility to assist each individual pupil to assume more responsibility for his own actions as he matures and gains experience. While it is recognized that children and youth can be controlled through fear and actual physical restraint, the purpose of the school is to help students develop self-control and self-discipline. For this reason:

1. Discipline and control must be treated as an individual matter for each pupil. Each student must be dealt with as an individual according to his age and maturity, experience, abilities and interests, and values.

2. The best discipline is preventive in nature rather than regulatory and restrictive. A student's behavior in school is directly related to many internal and external factors, including: the student's image of himself, his active participation in both the curricular and extra-curricular activities of the school, his motivation to learn, and the understanding and support he receives from his parents, his teachers, and other adults.

Since boys and girls are basically motivated to learn and to meet standards of acceptable behavior, the role of teachers and other school employees should be one of guiding pupils in understanding, establishing and maintaining these acceptable behavioral standards.

Every effort should be made by the staff to solve disciplinary problems within the school setting and without excluding a student from school. If this cannot be done, exclusion may be necessary; these exclusions may fall in the following categories:

A. Temporary separation—Is defined as exclusions from school for up to three days, either from one class period or for the full day.

B. Suspension—is defined as exclusion of a student from school for a specific period of time terminating at the end of the specified period or upon the fulfillment of a specific set of conditions. Suspension for periods of time beyond 10 days is discouraged.

C. Expulsion—is defined as the permanent exclusion of a student from school.

Parents shall be informed and involved in any case of a student exhibiting a history of unacceptable conduct. Records of such involvement shall be maintained in the principal's office.

The principal shall be responsible for documenting evidence to support any action of suspension or expulsion as well as efforts to solve the problem. Such documentation shall be in writing.

III. The authority of the board of education to authorize suspension and to make reasonable rules and regulations regarding discipline is granted in Sections 340.613 and 340.614 of the School Code. Section 340.613 authorizes suspension for the following reasons: Gross misdemeanor, persistent disobedience, or habits or bodily conditions detrimental to the school.

Assuming the responsibility granted to it by law, the board of education establishes the following categories of misconduct (while a student is under jurisdiction of the school) as those which may result in temporary separation, suspension or expulsion from the Chelsea School District schools. These categories are general in nature and are not deemed to be all inclusive.

A. Matters relating to public and private property.

1. Examples: a) Theft, b) Misuse of books, materials and equipment, c) Defacing property, d) Trespassing (unauthorized presence in a building).

B. Matters pertaining to citizenship.

1. Examples: a) Violation of state laws, local ordinances, approved safety and fire codes, laws pertaining to civil disobedience, b) Use of profane and obscene language, c) Possession of weapons or explosives.

C. Matters pertaining to attendance.

1. Examples: a) Violation of compulsory attendance laws, b) Persistent tardiness, c) Failure to attend school regularly if above compulsory school age, d) Skipping school.

D. Matter pertaining to safety of others.

1. Examples: a) Physical attacks or threats to students or school employees, b) Fighting, c) Extortion.

E. Persistent disobedience and/or breaking of school rules and regulations.

Gross misbehavior—Conduct detrimental to the normal functioning of the school or school activities.

IV. On the basis of the present status of present school law the principals of Chelsea School District schools are delegated the authority to temporarily separate or suspend a student from school. Suspensions of more than 10 days are to be discouraged. In such actions the following precepts shall be adhered to.

A. A student shall be fully informed of the charges brought against him including the rationale for the action and the conditions of time and termination.

B. The parents shall be immediately notified by phone or personal contact if the student is to be temporarily separated or suspended from school. Written notation of such contact shall be made in the student's accumulative file.

C. Verbal notification shall be followed by written communication to the parent or guardian stating the charges, reasons and conditions of the separation or suspension. A copy of the letter shall be placed in the student's accumulative file.

D. The superintendent, or administrative officer designated by him, shall be notified immediately of any separation or suspension.

E. Parents shall be notified in writing of appeal procedures which shall include:

1. Parents may request a conference with the principal. Such requests shall be made within the period of separation or suspension. The principal shall affirm or modify the terms of his action within two school days from the date of the conference. The principal's decision, in cases of temporary separation, shall be final.

2. Within 5 school days from the principal's decision the parent may appeal such decision to the superintendent of schools or his designee. The superintendent shall affirm or modify the decision of the principal within two days from hearing the appeal.

3. The superintendent's decision may be appealed to the board of education within five school days of such decision.

4. The board of education shall schedule a hearing within 10 school days and shall notify the parents that said hearing shall be conducted under the following rules and procedures:

a. Written notice shall be given of the time, date and place of the hearing.

b. The student or parent may be represented by an attorney or other advisor of their choosing.

c. Witnesses may be presented at the hearing and the student or his representative may question witnesses testifying against the student.

d. The hearing is not a court proceeding and court rules of evidence shall not be enforced at such hearing.

e. There may be present at the hearing the principal, the board of education's attorney and such resource persons as the president of the board of education deems essential to the proper adjudication of the case.

f. The board of education shall render a written opinion of its determination within two school days from the date of the hearing. Such written opinion shall be forwarded to all parties concerned.

g. Recommendation for the expulsion of a student from school shall be made to the board of education by the superintendent. Such action is generally taken upon recommendation of the principal. The principal's recommendation shall be communicated to the superintendent in writing, signed by the principal and accompanied by the student's accumulative file; except in cases stemming from extreme overt behavior it is expected that parental conferences would have been at the building level prior to the exclusion recommendation. The following procedures shall be followed:

A. The student shall be under suspension pending the recommendation of the superintendent to the board and pending the board's decision.

B. The superintendent's recommendation to the board shall be in writing. It shall include the essential elements which form the basis of the charge. A copy of the recommendation shall be transmitted to the parent or guardian of the student being considered for expulsion.

C. The board of education shall set the date, time and place of the hearing and shall transmit written notice of same to the parent or guardian at least five school days before the date of the hearing.

against him including the rationale for the action and the conditions of time and termination.

B. The parents shall be immediately notified by phone or personal contact if the student is to be temporarily separated or suspended from school. Written notation of such contact shall be made in the student's accumulative file.

C. Verbal notification shall be followed by written communication to the parent or guardian stating the charges, reasons and conditions of the separation or suspension. A copy of the letter shall be placed in the student's accumulative file.

D. The superintendent, or administrative officer designated by him, shall be notified immediately of any separation or suspension.

E. Parents shall be notified in writing of appeal procedures which shall include:

1. Parents may request a conference with the principal. Such requests shall be made within the period of separation or suspension. The principal shall affirm or modify the terms of his action within two school days from the date of the conference. The principal's decision, in cases of temporary separation, shall be final.

2. Within 5 school days from the principal's decision the parent may appeal such decision to the superintendent of schools or his designee. The superintendent shall affirm or modify the decision of the principal within two days from hearing the appeal.

3. The superintendent's decision may be appealed to the board of education within five school days of such decision.

4. The board of education shall schedule a hearing within 10 school days and shall notify the parents that said hearing shall be conducted under the following rules and procedures:

a. Written notice shall be given of the time, date and place of the hearing.

b. The student or parent may be represented by an attorney or other advisor of their choosing.

c. Witnesses may be presented at the hearing and the student or his representative may question witnesses testifying against the student.

d. The hearing is not a court proceeding and court rules of evidence shall not be enforced at such hearing.

e. There may be present at the hearing the principal, the board of education's attorney and such resource persons as the president of the board of education deems essential to the proper adjudication of the case.

f. The board of education shall render a written opinion of its determination within two school days from the date of the hearing. Such written opinion shall be forwarded to all parties concerned.

g. Recommendation for the expulsion of a student from school shall be made to the board of education by the superintendent. Such action is generally taken upon recommendation of the principal. The principal's recommendation shall be communicated to the superintendent in writing, signed by the principal and accompanied by the student's accumulative file; except in cases stemming from extreme overt behavior it is expected that parental conferences would have been at the building level prior to the exclusion recommendation. The following procedures shall be followed:

A. The student shall be under suspension pending the recommendation of the superintendent to the board and pending the board's decision.

B. The superintendent's recommendation to the board shall be in writing. It shall include the essential elements which form the basis of the charge. A copy of the recommendation shall be transmitted to the parent or guardian of the student being considered for expulsion.

C. The board of education shall set the date, time and place of the hearing and shall transmit written notice of same to the parent or guardian at least five school days before the date of the hearing.

D. The superintendent, or administrative officer designated by him, shall be notified immediately of any separation or suspension.

E. Parents shall be notified in writing of appeal procedures which shall include:

1. Parents may request a conference with the principal. Such requests shall be made within the period of separation or suspension. The principal shall affirm or modify the terms of his action within two school days from the date of the conference. The principal's decision, in cases of temporary separation, shall be final.

2. Within 5 school days from the principal's decision the parent may appeal such decision to the superintendent of schools or his designee. The superintendent shall affirm or modify the decision of the principal within two days from hearing the appeal.

3. The superintendent's decision may be appealed to the board of education within five school days of such decision.

4. The board of education shall schedule a hearing within 10 school days and shall notify the parents that said hearing shall be conducted under the following rules and procedures:

a. Written notice shall be given of the time, date and place of the hearing.

b. The student or parent may be represented by an attorney or other advisor of their choosing.

c. Witnesses may be presented at the hearing and the student or his representative may question witnesses testifying against the student.

d. The hearing is not a court proceeding and court rules of evidence shall not be enforced at such hearing.

e. There may be present at the hearing the principal, the board of education's attorney and such resource persons as the president of the board of education deems essential to the proper adjudication of the case.

f. The board of education shall render a written opinion of its determination within two school days from the date of the hearing. Such written opinion shall be forwarded to all parties concerned.

g. Recommendation for the expulsion of a student from school shall be made to the board of education by the superintendent. Such action is generally taken upon recommendation of the principal. The principal's recommendation shall be communicated to the superintendent in writing, signed by the principal and accompanied by the student's accumulative file; except in cases stemming from extreme overt behavior it is expected that parental conferences would have been at the building level prior to the exclusion recommendation. The following procedures shall be followed:

A. The student shall be under suspension pending the recommendation of the superintendent to the board and pending the board's decision.

B. The superintendent's recommendation to the board shall be in writing. It shall include the essential elements which form the basis of the charge. A copy of the recommendation shall be transmitted to the parent or guardian of the student being considered for expulsion.

C. The board of education shall set the date, time and place of the hearing and shall transmit written notice of same to the parent or guardian at least five school days before the date of the hearing.

C. The hearing procedures shall follow that set forth in IV-E-4 of this document.

VI. Efforts shall be made by the school, but not guaranteed, to provide alternate means by which a student under an extended suspension or expulsion may continue his education. Such opportunities may include evening classes, correspondence courses, special programs, or transfer to another school or school system.

*Editor's Note: Section 340.613 of the School Code indicates that the board may take such action in the case of any pupil guilty of "gross misdemeanor or persistent disobedience, or one having habits or bodily conditions detrimental to the school."

It is noted, however, that students who have been declared physically or mentally handicapped, unless a clinic, physician, or authorized agency, recommends that the child is incapable of benefiting from public school attendance. It is also

excepts those children the parents of whom refused to have the child examined to determine a physical or mental handicap.

Section 340.614 gives the board authority to make reasonable rules and regulations affecting the "proper establishment, maintenance, management or carrying on of the public schools," including "regulations relative to the conduct of pupils concerning their safety while in attendance at school, or enroute to and from school."

Boy Scout Troop 420 Scores in District First Aid Meeting

Saturday, March 13, Boy Scout Troop 420 participated in the Troop District First Aid Meeting at Whitmore Lake High school. There were 23 boys, and six adults present. The four patrols won three first-place awards, and one second-place award for their efforts.

TODAY'S THOUGHT

By LOUIS BURGHARDT

People today have lots of things on their minds. Consequently, people forget things quickly. . . . This is the one and only reason why we hear and hear and hear the same, same, same words in so many TV commercials. A good example of how fast people forget can be shown in this way—

Did you read yesterday's paper? With only one day gone by, think back and see if you can quote the front page headline! If you can, you are an exception. Most people can't. Better yet, as you read this thought which appears on an inside page of this paper, can you accurately quote the headline you read on page one of this paper you are NOW reading? Don't feel badly if you can't. It just goes to show how most people can and do forget so quickly.

There is one thing in life most people rarely forget—kindness! Only ungrateful people forget acts of kindness but, fortunately, most people are grateful. An excellent example of how kindness is remembered is shown in the parable of the Good Samaritan. Nearly everyone knows and remembers the story, churchgoer or not. Yet, in scripture, the story of the Good Samaritan is told only ONCE! Just a few short lines! Yes—kindness is remembered and the best way to be remembered is to be kind. . . . BURGHARDT FUNERAL HOME, 214 East Middle St., Chelsea, Mich. Phone GR 5-4141.

—SPECIALS—

ECKRICH SLENDER SLICED
Meats 3 pkgs. 85c
12-OZ. PKG. INDIVIDUAL WRAPPED KRAFT.
Sliced Cheese 59c
American or Pimento
200-COUNT PKG. PAGE
Napkins 2 for 49c
12-OZ. CAN
Treet 51c
NO. 303 CAN GREEN GIANT
Peas 3 cans 65c

KUSTERER'S
FOOD MARKET
DIAL 475-2721 WE DELIVER



ANY TRIP YOU MAKE will be more pleasant, if the car you drive is financed the Bank Way—economically, conveniently and with local people.

CHELSEA STATE BANK
Member Federal Reserve System FDIC Member Federal Deposit Insurance Corp.

LOCAL 437 & 1284 MEMBERS—See Your Plant Chairman for details of the package plan we offer.

OFFICE HOURS (No Appointment Necessary)
Tues., 3:30-5:30, Thurs., 3:30-5:30, Sat., 10-3

SPECIAL 1st SUNDAY SALE

Thursday and Friday,
March 18-19 Only
Buy 1 at Regular Price
Get 2nd for 1c

Home of fine Brazier foods.
Dairy Queen
brazier.
901 S. MAIN ST., CHELSEA PHONE 475-2677

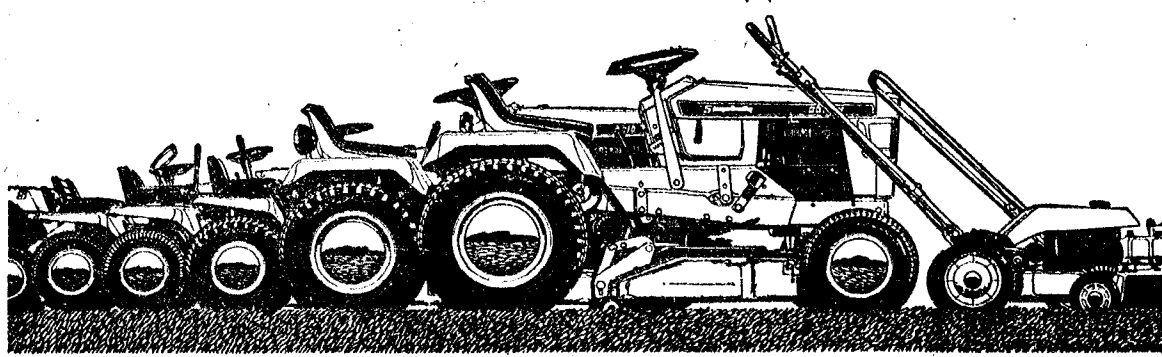
we offer Simplicity 8 different ways.

TRACTORS

- Six hardworking tractors... 5 hp. to 14 hp... 24" to 48" cutting widths.
- Non-scap mowing with a patented free-floating mower.
- Touch-O-Matic® clutching for controlled inching and a more accurate cut.
- Attachments that hitch up in seconds... without tools.

WALK-BEHIND MOWERS

- Three 21" walk-behinds. Self-propelled with Easy-Spin rewind or electric start. A push model with rewind starting.
- Two 19" push mowers. Your choice of rewind or electric start.
- Cutting heights adjust from 7/8" to 2 1/2" with a twist of your fingers... in seconds.
- Mowers that change over easily. From catching... to mulching... to dispersing. All with standard equipment.



Your life is complicated enough. We offer Simplicity.

CHELSEA HARDWARE
110 South Main St. Phone GR 9-6311

Community
Calendar

Regular meeting of Chelsea Woman's Club, 8 p.m., March 23, at McKune Club Room. David Gerwin will show a movie and talk in National Parks.

Dexter township board meeting, at Mrs. Winifred Aberdeen's home, 9023 Winston Dr., Portage Lake, Tuesday, March 23, at 8 p.m.

Publications Class at Chelsea High school Car Wash, to be held March 20, at the Pump and Pantry Gulf Station in town, from 8 a.m. to 5 p.m. Cost, \$1.00. Proceeds go toward the publication of the high school literary magazine, The Acetate, which will be sold later this spring.

Annual meeting of the Mill Creek Research Council, March 30, 8 p.m. at the Lima Community Hall. Election of a new board of directors, and reports on the activities concerned with the proposed park are on the agenda.

OES Annual Spring Luncheon and Card Party, Thursday April 1, 12:30; reservations by March 30 to Mrs. Byron Prichard, 426-8439 tickets, \$1.35. x40

Chelsea Community Fair Board meeting, Tuesday evening, March 23, 8 p.m. at McKune Memorial Library.

Chelsea Child Study Club, March 23, 8 p.m., at the home of Mrs. Charles Cattell. Election of officers.

TOPS Club at library, Wednesday afternoon group, 12:30 p.m. For information call 426-4542. Thursday evening group, 7 p.m. For information call 475-8720.

American Legion and Auxiliary hospital equipment available by contacting Loren Keezer at 475-2766 or 475-3431.

Sewing every Tuesday afternoon at Korner House.

Inquiries regarding the Chelsea blood bank may be directed to Harold Jones in the event that Mrs. Dudley Holmes is unavailable.

Never Rest Farm Bureau March 19, 8 p.m., at the home of Mr. and Mrs. Bill Haegsler.

Terrific Tailors 4-H club style show for members and parents, March 20, 1:30 to 3:30 p.m. Next business meeting, April 3, at the home of Denise Wirtz.

Fun Night every Friday night at 7:30 p.m. at Korner House, Main St.

Parents without partners, Ann Arbor chapter 38, please call 426-8900 for information, 8090 Huron St., Dexter. Xavd39

Older Adult Group of the Methodist church, March 20, 12:30 p.m. dinner to be given by the Action Group of the Methodist church. Bring own table service.

Ag. Entrepreneurs tonight, Thursday, March 18, at the home of Mr. and Mrs. Harold Sias, 8:30 p.m. Bring cake, sandwiches, or Jell-O.

The 4-H Teen Leader Club of the Dexter-Chelsea District meet at Karl Lampe's home Tuesday, March 30, 8 p.m. Bicycle safety sessions to be planned.

Public Spring Salad Luncheon at the Congregational church March 24, 11 a.m. to 1:30 p.m., Men's dining room. Bake sale, nursery tickets available from members, Patty Ann Shoppe or Murphy's Banter shop. Donation, \$1.50. adv39

North School Boosters, March 18, 8 p.m. Playground equipment project.

BIRTHS

A son, Zachary, March 14, to Mr. and Mrs. James Hosler of Lansing. Maternal grandparents are Mr. and Mrs. Glen Breiten, of Jackson, and maternal great-grandparents are Mr. and Mrs. Wilbert Breitenwischer of Chelsea. Paternal grandmother is Mrs. Dorothy Hosler of Rives Junction.

A son, Jeffrey Arthur, March 16, to Mr. and Mrs. Lenard E. McDougall.

A daughter, Sonya Ann, March 16, to Mr. and Mrs. John Osinski, of Ypsilanti. Mrs. Osinski is the former Judy Ann Hafeley, of Chelsea. Maternal grandparents are Mr. and Mrs. LaVern Hafeley, paternal grandfather is Marion Osinski.

1971 Bulldog Varsity Track Schedule

Mar. 26—Huron Relays, Ypsilanti
Apr. 2—Spartan Relays
Apr. 2—East Lansing
Apr. 6—Michigan Center
Apr. 8—Dundee
Apr. 15—Novi
Apr. 22—Milan
Apr. 24—Eagle Relays
Apr. 24—Jackson Parkside
Apr. 29—Lincoln
May 1—Albion Relays
May 4—South Lyon
May 6—Saline
May 8—Cardinal Relays
May 11—Dexter
May 15—Regional Mich. Center
May 20—Conference South Lyon
May 22—State Michigan Center
May 24—Jackson Honor Roll Meet

DEATHS

Mrs. Clifford Ranney
Former Chelsea Resident
Dies in Pennsylvania

Mrs. Bess Kempf Ranney, of York, Pa., formerly of Chelsea, died Monday, March 15, at her home. She was born in Chelsea, the daughter of Wilbur F. and Kate C. Cummings Kempf.

Formerly a resident of Birmingham, she was the widow of Clifford H. Ranney. She was a graduate of Hillsdale College, Hillsdale, and a member of the School's alumni association, and Pi Beta Phi sorority. She was a member of St. John Episcopal church in York.

Survivors include a daughter, Mrs. Dick M. Coombs, of York, Pa., and a sister, Mrs. William K. Edmondson, of Royal Oak.

Funeral services will be held today, Thursday, at 10:30 a.m. at St. John Episcopal church, York, Pa. Interment will be in York, Pa.

George E. Friggens
Native of England Dies
Saturday at Methodist Home

George E. Friggens, 87, died Saturday, March 13, at the Chelsea Methodist Home. He had resided at the home since Dec. 5, 1956. He was a retired dry cleaner.

Born Sept. 24, 1883 in St. Just, Cornwall, England, he was a son of Philip and Harriet Rowe Friggens. He was a member of Chelsea United Methodist church.

He was married to Laura Nicholas Dept. 26, 1907. She preceded him in death on Nov. 14, 1957. He married Nora Gosson on June 6, 1959. She died Sept. 16, 1969.

Surviving is a son, Francis G. Friggens of Royal Oak; a daughter, Mrs. Arthur (Jewel) Coney of Beaver, Pa., and two grandsons.

Funeral services were held at 10 a.m. Tuesday, March 16 at the Methodist Home Chapel with the Rev. Edwin J. Weiss, of Ann Arbor, officiating. The Rev. Clive Dickens officiated at the burial at Oak Grove Cemetery. Funeral arrangements were made by Burghardt Funeral Home.

LeLand J. Proal
Former Lansing Resident
Dies at Methodist Home

LeLand J. Proal, Chelsea Methodist Home, aged 79, died Friday, March 12, at the Chelsea Community Hospital.

He was born Nov. 19, 1891, at Cass City, the son of James and Margaret Willis Proal.

He was a sub-station operator for the Detroit Edison Co. He married Arvilla E. Creighton on June 15, 1914. She survives and is also a resident of the Methodist Home. The couple came to the Methodist Home from Lansing on June 8, 1970.

Mr. Proal is survived by his widow, one daughter, Mrs. Clare Hardenburg of Lansing, and one sister, Mrs. Roy Wise of Lake Worth, Fla. Two daughters preceded him in death, Mrs. Helen Black, and Mrs. Margaret Norton.

Cremation has taken place. Memorial services will be held Friday, March 19, at the Chelsea Methodist Home Chapel, at 10 a.m., with the Rev. Richard L. Clemans, officiating. Arrangements were by Staffan Funeral Home.

MICHIGAN WINTER SPORTS

Michigan winter sports centers boast more than 600 slopes and runs and more than 400 lifts and tows, including 68 double, triple and four-place chair lifts, according to the Michigan Tourist Council.



[You and your business could] be wiped out... Get Auto-Owners Multi-Peril Protection. See your A-O Man.

A. D. MAYER AGENCY, INC.

"Your Protection Is Our Business" 115 Park St. Chelsea Phone 479-5061

Auto-Owners INSURANCE COMPANY Home office at Lansing, Michigan

Nicholas J. Lawless
Chelsea Woman's Father
Dies Friday at Lyons

Nicholas Joseph Lawless, 81, of Keeler Highway, Rte. 1, Lyons, died at his centennial farm home Friday, March 12.

He was born in Lyons township May 31, 1889, the eldest son of Joseph and Elizabeth Fitzpatrick Lawless. He was married to Anna Phillips Oct. 1, 1911.

He was a life-long resident of this area. After graduation, from Portland High school, he attended the University of Michigan, and taught in the Ionia county schools.

Surviving are his widow, Anna; one son, Perry of Portland; three daughters, Mrs. Ross (Anita) Scholtens, of Chelsea, Mrs. Harvey (Eleanor) Brown of Laingsburg and Mrs. Richard (Jean) Wernette of Plymouth; 12 grandchildren; one brother, John Lawless of Portland; two sisters, Mrs. James O'Connor of Ionia, and Mrs. Lawrence Dark of Grand Rapids.

Funeral services were Monday at 9 a.m. at St. Patrick Catholic church in Portland. The Rev. Fr. Joseph Malewitz officiated, and interment was at Portland Cemetery.

Bearers were nephews Patrick, Marvin, Frederick, Richard and Robert Lawless, and Jack Dark.

Four Injured in
Head-on Crash
On Steinbach Rd.

Four persons were injured Sunday, March 14, in a two-car head-on crash that occurred on Steinbach Rd., at Pleasant Lake Rd., in Freedom township.

Washtenaw county sheriff's deputies indicated that cards driven by Mary L. Herrst, 65, of Manchester, and Ronald E. Dibble, 73, of 7575 Pleasant Lake Rd., Lodi township, collided at the crest of a hill. Officers said at the point where the collision occurred, snow banks on either side of the road reduced the width of the highway to about 13 feet.

Injured and taken to St. Joseph Mercy Hospital were Mrs. Herrst, Dibble and two passengers in his car, Mrs. Peggy Dibble, 22, of the Pleasant Lake Rd. address, and her 11-month-old son, Scott.

Chelsea Police Nab
Man Sought in Detroit

Patrolman Peebles of the Chelsea police force, helped the Detroit police department Friday morning, March 12. Peebles was on routine patrol that morning, at about 5 a.m., just south of town, when he spotted a vehicle traveling south at a slow rate of speed. The car looked "suspicious," so Peebles stopped the vehicle and ran a routine check on the subjects in the car.

Roosevelt Robertson, 45, of Detroit, was wanted in Detroit, it turned out, on a charge of assault and battery. He was arrested on the warrant, and was transported to the county jail.



JULIUS BLAESS, a Kiwanis club member, is a neighbor of Mrs. Harry W. Denham, Jr., who addressed Chelsea Kiwanis club Monday evening. Blaess was responsible for securing Mrs. Denham for the evening's program, and introduced her at the meeting.

Kiwanians Briefed on Park
Progress By MCRC Director

Mrs. H. W. Denham, Jr., addressed the Chelsea Kiwanis Club at their Monday evening meeting, March 15. Mrs. Denham, who is a member of the Mill Creek Research Council Board of Directors, spoke on the proposed Huron Clinton Metropolitan Authority park on Mill Creek.

Julius Blaess, a neighbor, and friend of Mrs. Denham, who was responsible for obtaining her as a speaker, introduced her to Kiwanians.

Mrs. Denham is a member of the Interior Design Services Department at the University of Michigan, and has been very active in community affairs. She is secretary of the Lima Township Planning Committee, and has been a leader in the movement of the

Electronics Institute
Representative To Visit
Chelsea High Students

Representative from the United Electronics Institute will visit Chelsea High school March 25, at 1 p.m. in the high school auditorium.

Some of the topics he will deal with include the rapid change in the world of work, along with slides from the UAW, NASA, and the institute. The talk will center on the need for technicians, primarily electronic, in the future. Fields dealt with will include space, aviation, computers, communications, automation, electronics in medicine, laser, and how electronics affect all jobs, now, and in the future.

Future electronic devices, and their uses, will conclude the program.

OPPORTUNISTS Efficiency experts are average guys who have learned from their wives that nagging pays.

DEXTER JAYCETTES
announce the
SPRING FASHION REVUE
THURSDAY, MARCH 18
Wylie School Cafetorium - 7:30 p.m.

WANTED
CEMENT & BLOCKWORK
All types—Poured walls, floors, drives
and foundations.
CECIL CAUDILL
(517) 851-3847

YOU'VE WAITED A LONG TIME
FOR THAT NEW KITCHEN—
CHELSEA LUMBER CO.
CAN MAKE THE WAIT WORTHWHILE
★ WOOD-MODE ★ DUTCH-CRAFT
★ MERILLAT
3 GREAT LINES OF CABINETS
ENTICINGLY DISPLAYED - DISCOUNT PRICED
Main St. at the Clock Tower in Chelsea

Want to sell a car? Use a Standard Want Ad!

ONCE-A-YEAR! HERE... NOW!

GENERAL ELECTRIC

RED TAG BEST BUYS

GE FILTER-FLO® WASHER with exclusive MINI-BASKET®

RED TAG PRICE \$219⁹⁵

3 wash cycles including Permanent Press and Soak Cycle plus special settings for Extra Wash and delicate fabrics. 4 water levels—saves water, detergent. 3 wash/rinse temperatures. Mini-basket for those hand-wash and less than 2-lb. loads.

COMMERCIAL DRYER features Permanent Press Cycle with COOL DOWN

RED TAG PRICE \$139⁹⁵

High speed drying system with Variable Time Dry Control. Air Fluff setting. Big-capacity Lint Trap... easy to see and reach for cleaning. Porcelain Enamel Drum and Top. Cycle indicator light.

GE 3-CYCLE PORTABLE DISHWASHER with 3-Level Thoro-Wash

RED TAG PRICE \$199⁹⁵

3 wash cycles — for daily loads, pots and pans, plus Rinse and Hold for later washing. Automatic Detergent Dispenser and Rinse-Glo Rinse Agent injector. Lift-top Rack. Built-in Soft Floor Disposer. No pre-rinsing or hand-scrubbing. Just tip off large or hard scraps.

HEYDLAUFF'S
(Formerly Frigid Products)
113 N. Main St., Chelsea Phone GR 9-6651

GAMBLES

110 N. MAIN ST.

PHONE 475-7472

Easiest Way to
Lovelier Rooms

- Goes on easily
- One coat covers most walls
- Guaranteed washable
- Hundreds of lovely colors

Finest Enamel

FOR KITCHEN AND BATHROOM WALLS AND WOODWORK THROUGHOUT YOUR HOUSE



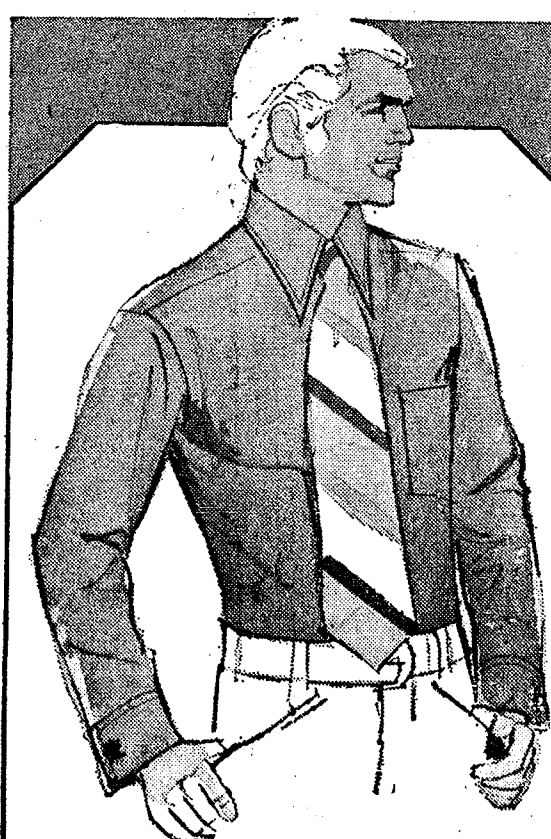
- Stays good-looking under punishment
- Colors to match Super Kem-Tone Wall Paint

Kem-Glo ENAMEL

Looks and washes like baked enamel!

ANY PAINT COLOR YOU WANT...

Mixed in Seconds on Our Colormeter



your next shirt should be

Century Century

by VAN HEUSEN \$7.50

STRIETER'S MEN'S WEAR
"The Place To Go For Brands You Know"

The Supermarket That's Just a Little Bit Better

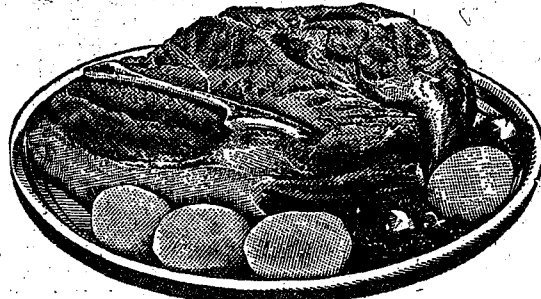
Stop & Shop

14901 Old U.S.-12
Corner at M-52
Chelsea



Prices effective Wednesday, March 17, 1971
through Tuesday, March 23, 1971.

"Triple R Farms" U.S.D.A. Choice
**BLADE CUT
CHUCK ROAST** **89^c** lb.



"Triple R Farms" U.S.D.A. Choice
Chuck Roast Center Cut **69^c** lb.

"Triple R Farms" U.S.D.A. Choice
Chuck Roast Round Bone or English Cut **89^c** lb.

Stop & Shop's Fresh, Lean, All American Beef
Hamburger 5-Lb. Units or more **59^c** lb.

Stop & Shop's Homemade
Pork Sausage ... **59^c** lb.

Lean, Tender, Meaty
Pork Steaks ... **69^c** lb.

"Triple R Farms" Mich. Grade 1
Skinless Wieners **59^c** lb.

"Triple R Farms" Mich. Grade 1
Ring Bologna ... **69^c** lb.

Boston Butt
Pork Roast ... **49^c** lb.

"Triple R Farms" U.S.D.A. Choice
**Ground Round
Steak** ... **99^c** lb.

Lean, Tender, Boneless & Cubed
**Breaded Pork
Cutlets** ... **79^c** lb.

BONUS SPECIAL
Fresh-A-Byes
**DISPOSABLE
DIAPERS**
Toddler 30 Ct. **\$1.29**

BONUS SPECIAL
Gerber
**STRAINED
BABY FOOD**
9^c

BONUS SPECIAL
Deming's
**RED
SALMON**
1-Lb. Tall Can **88^c**

BONUS SPECIAL
Kellogg's
**CORN
FLAKES**
Family Size 1-Lb., 2-Oz. Box **29^c**

**YOU SAVE MORE
WITH OUR
MINI-
PRICING**
(Minimum Price Possible)

BONUS SPECIAL
Stop & Shop's Enriched Sliced
White Bread
1 1/4-Lb. Loaf
5 for 95^c

BONUS SPECIAL
All Varieties Banquet
POT PIES
8-Oz. Pie **14^c**

BONUS SPECIAL
Canned Pop
FAYGO
12-Oz. Can **8^c**

BONUS SPECIAL
Stokely's Finest
**TOMATO
JUICE**
1-Qt., 14-Oz. Can **23^c**

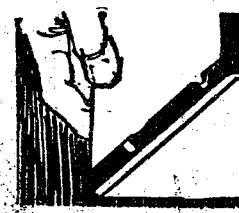
BONUS SPECIAL
Freshlike Vegetables
Whole Kernel Corn 12 oz.
Cream Style Corn 14.5 oz.
Cut Green Beans 12 oz.
French Style Green Beans 12 oz.
Sliced Carrots 14 oz.
YOUR CHOICE
4 for 88^c

Farm Fresh Produce
U. S. No. 1 Michigan
POTATOES 10-Lb. Bag **48^c**
U. S. No. 1 Yellow
Pascal Celery 30 Size **19^c**
Florida
ORANGES 5-Lb. Bag **59^c**

A happy pair
FROM US... TO YOU!
HIS & HERS:

The Family Handyman Do-it-Yourself Encyclopedia

Worried about walls and steps that need redoing? Dreaming about a patio? This is the encyclopedia that makes such complicated-sounding jobs easy.



Now you can get things done, and save at the same time. A remarkable 2-way advantage this comprehensive set of books gives you.

Are your floors, walls, and ceilings shabby? Change them in no time by following the easy step-by-step instructions.

With this unique set of books, you're on your way to a whole new standard of living... and saving. You'll be able to add to the comfort and value of your home in a dozen different ways. And best of all, you'll feel ten feet tall when you see the results of your handiwork. Pick up Volume 1 today at this special introductory price. See how much is in that one volume alone. Then assemble the rest. These are some of the features you'll be getting:

- 16 fact-filled volumes
- over 1000 articles
- more than 6000 illustrations, diagrams, and charts
- step-by-step procedures
- decorating ideas
- improvement suggestions
- repair techniques
- indoor and outdoor projects



Is 1/2 of your closet space wasted? See how you can make every inch count.

Volume One only 49^c

Volumes 2-16
\$1.69 each

Flamenco

PORCELAIN-CLAD STEEL COOKWARE
In shapes and sizes to take care of your every cooking need.

- **Easy to cook in**
Flamenco cooks on a low, low flame. The steel base, coated with durable porcelain, supplies smooth, even heating throughout.
- **Easy to look at**
Contemporary, attractive Flamenco goes to the table with style. Tight-fitting lids. Beautiful colors. Vibrant Avocado or Spanish Gold.
- **Easy to handle**
The covers are easy-grasp continental style, with custom-contoured thumb grip handles that won't twist or heat.
- **Easy to care for**
The easiest cleaning possible. No scrubbing. No scouring. No special cleaners. Just soap and water.

save 40%

WEEK ONE	WEEK TWO	WEEK THREE	WEEK FOUR	WEEK FIVE
1 quart saucepan ALL 16 WEEKS \$1.49	1 1/2 quart covered saucepan \$2.99	2 quart tea kettle \$6.99	2 1/2 quart covered saucepan \$4.49	10" skillet \$4.49
WEEK SIX	WEEK SEVEN	WEEK EIGHT	WEEK NINE	WEEK TEN
5 quart covered Dutch Oven \$6.49	10" covered chicken fryer \$5.99	3 1/2 quart covered casserole \$5.49	12" oval au gratin \$4.49	8" skillet \$2.99

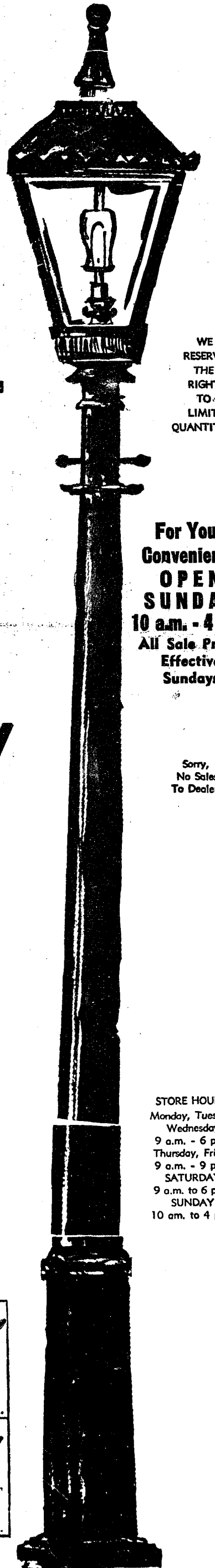
STARTS MONDAY, MARCH 1, 1971

WE RESERVE THE RIGHT TO LIMIT QUANTITIES

For Your Convenience
OPEN SUNDAY
10 a.m. - 4 p.m.
All Sale Prices Effective Sundays

Sorry, No Sales To Dealers

STORE HOURS:
Monday, Tuesday, Wednesday
9 a.m. - 6 p.m.
Thursday, Friday
9 a.m. - 9 p.m.
SATURDAY
9 a.m. to 6 p.m.
SUNDAY
10 a.m. to 4 p.m.





BOWLING NEWS



Old Timers League

Standings as of March 13

	W	L
Sportman's Bar	7 1/2	40 1/2
Nelson Realtors	6 1/2	43 1/2
Sanford Security	6 1/2	46
Colonial Lanes	6 1/2	47 1/2
Cloverleaf Lanes	6 1/2	50
Bob & Otto Standard	6 1/2	51 1/2
Hotel Service	6 1/2	52
Team No. 19	6 1/2	53 1/2
Dexter Bowl 'n' Bar	6 1/2	54 1/2
Stein & Goez	6 1/2	55 1/2
Mather Co.	6 1/2	56
Team No. 14	6 1/2	57 1/2
Merkel Furniture	6 1/2	58
Lacy 13	6 1/2	59
Harman Ins.	6 1/2	60
High team game: Bob & Otto Standard, 820.		
High team series: Sportsman's Bar, 2,378.		
High ind. game: E. Niethammer, 217.		
High ind. series: G. Niethammer, 552.		
Other 200 games, series and over: G. Haines, 209; G. Rohde, 204; G. Riethmiller, 204; J. Otto, 204; E. Niethammer, 536; G. Rohde, 525; A. Murry, 523; R. Exelby, 521; P. Nass, 517; W. Tyra-kowski, 517; G. Haines, 501; G. Lawrence, 501.		

Chelsea Nite Owl League

Standings as of March 15

	W	L
Steele's Heating	7 1/2	35 1/2
Foster's Men's Wear	7 1/2	36 1/2
Heller Electric	6 1/2	47
Mid-State Finance	6 1/2	48
Cavanaugh Lake Store	6 1/2	49
Smith's AIAA	6 1/2	55
Pump & Pantry	6 1/2	57
Waterloo	6 1/2	60
Jack & Son's Barbers	6 1/2	62
Wahl's Arco Sparks	6 1/2	65
McCalla Mobile Feeds	6 1/2	67
The Profs	6 1/2	68
600 series: A. Peterson, 615; T. Steele, 605.		
500 series: R. Green, 574; D. Warren, 554; G. Riethmiller, 547; D. Longworth, 546; H. Pennington, 545; W. Wood, 572; G. Miller, 536; J. Schaffner, 528; G. Rent-schler, 528; R. Smith, 524; R. Foster, 520; L. Heller, 512; A. Gieske, 508; K. Hartka, 507; M. Packard, 506; E. Heller, 504.		
200 games: R. Green, 255; A. Peterson, 246, 206; T. Steele, 224, 213; J. Hafner, 218; D. Longworth, 210; W. Wood, 209; J. Eder, 208; G. Riethmiller, 202; R. Smith, 200.		

Leisure Time League

Standings as of March 16

	W	L
Dead Balls	6 1/2	27 1/2
Three Misses	6 1/2	35 1/2
Throw Outs	6 1/2	41 1/2
Rug Rats	6 1/2	44
Gutter Cats	6 1/2	45
Bowling Bags	6 1/2	54 1/2
140 games and over: B. Bush, 144; P. Elliott, 139, 179, 177; G. Greenleaf, 144; K. Haywood, 144; S. Ringe, 146, 166, 142; P. Wurster, 148, 182, 144; M. Weston, 142, 139; S. Weston, 171; E. Swanson, 144.		
400 series and over: P. Elliott, 525; S. Ringe, 454; P. Wurster, 474; M. Weston, 421; S. Weston, 414.		

HAV-A-ELECTRIC

LICENSED ELECTRICAL CONTRACTOR

Re-Wiring and New Work Farm Wiring

BUILDERS: We Need Work.

Call 475-7357

Chelsea Lanes Mixed

Standings as of March 12

	W	L
H. & H.	10 1/2	69
Chelsea Lanes	10 1/2	71
Fitzsimmons	9 1/2	80
Excavating	9 1/2	83
Sindlinger & Pierce	9 1/2	84
Wolverine No. 2	9 1/2	85
Turner & Johnson	9 1/2	86
Rabbis & Priests	9 1/2	87
Gephart & Barkley	9 1/2	88
Ann Arbor Centerless	9 1/2	89
Devine & Coppertown	9 1/2	90
Bollinger's Sanitation	9 1/2	91
Heim & Arrington	9 1/2	92
Women's 150 and over: R. Johnson, 183, 192; J. Rabbitt, 156, 189; K. Arrington, 164, 183; A. Coppertown, 167; S. Klink, 167; J. Longworth, 179; L. Alexander, 166; R. Devine, 157, 159; B. Pike, 157; M. Heim, 157; J. Hutzler, 156, 162; L. Gilmore, 164; F. Gephart, 164.		
Women's 450 and over: R. Johnson, 506; J. Rabbitt, 488; F. Gephart, 478; K. Arrington, 468; R. Devine, 464.		
Men's 175 and over: R. Gilmore, 213; M. Packard, 199, 210, 177; F. Barkley, 209; A. Sannes, 207; D. Coppertown, 200, 195; D. Ellendwood, 199; O. Johnson, 196, 192; D. Alexander, 188; R. Fike, 180; R. Kiel, 178.		
Men's 475 and over: M. Packard, 586; O. Johnson, 561; D. Coppertown, 539; F. Barkley, 528; A. Sannes, 526; R. Gilmore, 508; R. Fike, 501; B. Harvey, 482; F. Klink, 477.		

Chelsea Suburban

Standings as of March 10

	W	L
Foor Mobil	7 1/2	39 1/2
Dairy Queen Braizers	6 1/2	43 1/2
Dancer's	6 1/2	45
Chelsea Lanes	6 1/2	54 1/2
State Farm	6 1/2	56
Artex Roll-Ons	6 1/2	57
G. A. Sales	6 1/2	58
Patty Ann	6 1/2	59
Dana Corp.	6 1/2	59
Chelsea State Bank	6 1/2	59
Waterloo Garage	6 1/2	64 1/2
Pittsfield Plastics	6 1/2	75
150 games and over: K. Snyder, 160; G. Wilkerson, 155; M. DeLaTorre, 179, 160; G. Klink, 156; B. Hadley, 150; R. West, 158; R. McGibney, 154, 201; M. Picklesimer, 164; R. Paul, 161, 167; L. Picklesimer, 159; J. Fitzsimmons, 199; P. Harok, 159, 163; D. Kinsey, 156; B. Smith, 187; S. Bowen, 159, 165; E. Yocum, 167; J. Kipfmiller, 200; V. Stewart, 164, 150; W. Liebeck, 155; E. Williams, 174; M. L. Westcott, 172, 159, 171; M. Olson, 162; P. Walz, 168; E. Schulz, 156; J. Boku, 177, 196; A. Coppertown, 163; N. Collins, 181, 163; N. Packard, 182.		
425 series and over: J. Boku, 519; N. Collins, 484; N. Packard, 461; E. Yocum, 436; J. Kipfmiller, 490; V. Stewart, 446; M. L. Westcott, 502; B. Smith, 451; S. Bowen, 463; R. Paul, 456; J. Fitzsimmons, 491; P. Harok, 466; B. Hadley, 445; R. West, 445; R. McGibney, 478; M. DeLaTorre, 485.		

Junior Swingers

Standings as of March 13

	W	L
Team No. 5	4 1/2	34 1/2
Team No. 2	4 1/2	39 1/2
Challengers	4 1/2	41 1/2
Team No. 3	4 1/2	44 1/2
Losers	4 1/2	44 1/2
Team No. 4	4 1/2	52
Games of 140 and over: M. Murphy, 154; B. Murphy, 149; V. Burnett, 140; L. Sannes, 160; B. McGuire, 144; L. Hafner, 159; B. Parker, 161.		
Series of 400 and over: M. Murphy, 422; L. Sannes, 429; K. Murphy, 408.		

Rolling Pin League

Standings as of March 16

	W	L
Spooners	6 1/2	42 1/2
Egg Beaters	6 1/2	43
Kookie Kutters	6 1/2	44
Coffee Cups	6 1/2	47
Grinders	6 1/2	48
Kitchen Kapers	6 1/2	49
Moppy Uppers	6 1/2	50
Mixers	6 1/2	51
Pots	6 1/2	52
Dish Rags	6 1/2	53
Brooms	6 1/2	54
Jolly Mops	6 1/2	55
400 and over series: J. Edick, 425; P. Harok, 444; L. Orlovski, 488; K. Brettschneider, 427; D. Kinsey, 417; J. Priest, 402; P. Borders, 421; S. Parker, 492; K. Del Prete, 401; C. Shepherd, 439; J. Pax, 415; J. Shepherd, 531; L. Keezer, 457; P. Steinaway, 460; W. Landwehr, 484; G. Brier, 489.		

Chelsea Women's Bowling Club

Standings as of March 10

	W	L
Chelsea Milling	8 1/2	25 1/2
Jiffy Mixes	7 1/2	37
Chelsea Lanes	6 1/2	48
Foster's Men's Wear	6 1/2	48
Parish's Cleaners	6 1/2	53 1/2
Wolverine Bar	6 1/2	54
The Pub	6 1/2	55
The Ugly Ducklings	6 1/2	57
N. American Rockwell	6 1/2	63
Chelsea Grinding	6 1/2	63
Norris Electric	6 1/2	71
Schneider's Grocery	6 1/2	73
450 series or over: P. Shoemaker, 525; P. Wurster, 507; M. Kozminski, 498; D. Alber, 491; P. Fitzsimmons, 487; B. Fike, 484; C. Stoffer, 481; D. Pouty, 472; R. Hummel, 472; L. Orlovski, 467; B. Mahar, 466; E. Sutter, 464; S. Klink, 453; A. Boham, 451.		
150 games or over: P. Shoemaker, 178, 232; P. Wurster, 191, 151, 165; D. Alber, 155, 184, 162; P. Fitzsimmons, 154, 155, 174; B. Fike, 154, 176, 154; C. Stoffer, 178, 150; D. Pouty, 168, 167; R. Hummel, 188, 156; L. Orlovski, 164, 162, 161; B. Mahar, 179; M. E. Sutter, 181; S. Klink, 158; A. Boham, 168, 165; A. Knickerbocker, 165; D. Bisenman, 154; M. A. Eder, 158, 169; G. Kuhl, 168, 164; C. Bradbury, 162; A. Fahrner, 152; J. Rowe, 162; P. Abdon, 156, 150; P. Poertner, 153; D. Eder, 150; S. Greenleaf, 172, 156; A. Alexander, 165; D. Bisenman, 153, 151; R. Litovsky, 178; K. Covert, 163; B. Parish, 161; K. Chapman, 180; P. Griffith, 161.		

Hi-Point Mixed League

Standings as of March 16

	W	L
Holy Terrors	6 1/2	38 1/2
HI Steppers	6 1/2	43 1/2
Dreadnaughts	6 1/2	52
Johnston & Johnston	6 1/2	52
Turf Abouts	6 1/2	57
MUH	6 1/2	57 1/2
Men, over 450 series: T. Rummel, 480; H. Morton, 506.		
Men, over 150 games: H. Morton, 184, 177; Y. Jeffers, 183, 162; T. Rummel, 199; D. Johnston, 171; E. Johnston, 167.		
Women, over 425 series: B. Barth, 426; G. Klappacher, 429; L. Rivers, 440; G. DeSmithar, 494.		
Women, over 150 games: B. Barth, 168; S. Johnston, 164; L. Rivers, 167, 168; G. Klappacher, 159; M. Inbody, 169; G. DeSmithar, 168, 192.		

Tri-City Mixed League

Standings as of March 12

	W	L
Stiver's Odd Balls	6 1/2	41 1/2
Trail Blazers	6 1/2	42 1/2
Jiffy Mixers	6 1/2	43
Village Beauty Salon	6 1/2	45
Chelsea Cleaners	6 1/2	46
Wolverine Tail & Small	6 1/2	49
Wolverine Early Birds	6 1/2	50
3-D Sales & Service	6 1/2	58
Smith Mobil	6 1/2	59
Sprague Buick & Olds	6 1/2	60
For Mobil	6 1/2	65
4 - W's	6 1/2	65 1/2
150 games, women: M. Ashmore, 168, 164; E. Detting, 166; G. Detting, 155, 152; B. Fike, 153, 154; D. Pouty, 157; D. Pouty, 187, 174; P. Griffith, 161; E. Miller, 152; B. Parish, 160; L. Peterson, 165; C. Stoffer, 152; B. Wisniewski, 156.		
450 series, women: C. Detting, 451; D. Pouty, 479.		
200 games, men: E. Harok, 202; A. Peterson, 222; W. Watkins, 200.		
500 series, men: R. Fike, 507; E. Harok, 575; H. Kunzelman, 509; A. Peterson, 575; W. Watkins, 538; T. Wisniewski, 501; R. V. Worden, 500.		

Rolling Pin League

Standings as of March 16

	W	L
Spooners	6 1/2	42 1/2
Egg Beaters	6 1/2	43
Kookie Kutters	6 1/2	44
Coffee Cups	6 1/2	47
Grinders	6 1/2	48
Kitchen Kapers	6 1/2	49
Moppy Uppers	6 1/2	50
Mixers	6 1/2	51
Pots	6 1/2	52
Dish Rags	6 1/2	53
Brooms	6 1/2	54
Jolly Mops	6 1/2	55
400 and over series: J. Edick, 425; P. Harok, 444; L. Orlovski, 488; K. Brettschneider, 427; D. Kinsey, 417; J. Priest, 402; P. Borders, 421; S. Parker, 492; K. Del Prete, 401; C. Shepherd, 439; J. Pax, 415; J. Shepherd, 531; L. Keezer, 457; P. Steinaway, 460; W. Landwehr, 484; G. Brier, 489.		

D. EDWARDS & SON

Home Maintenance Service

Vinyl or Aluminum SIDING - WINDOWS DOORS

Roofing - Roof Repair

- ALSO -

Building Maintenance and Supplies

Phone Chelsea 475-4231 or Napoleon 536-4843

SPORTS CORNER



WHEN THE PLAYOFFS BEGIN IN THE N.B.A. THE KNICKS WILL BE THE TEAM TO BEAT. CENTER WILLIS REED IS HEALTHY.

LAST SEASON'S PLAYER OF THE YEAR LED NEW YORK TO ITS FIRST TITLE IN 24 YEARS. HE HAS THE BEST COMBINATION OF OFFENSIVE AND DEFENSIVE SKILLS OF ANY BIG MAN (6'10") IN THE GAME TODAY...

469; E. Reynolds, 413; J. Rabbitt, 444; J. Lewis, 484; G. Blass, 464.

140 and over games: J. Edick, 160, 158; P. Harok, 143, 157, 144; L. Orlovski, 192, 191; K. Brettschneider, 159, 150; P. Patterson, 142; D. Kinsey, 150; J. Priest, 150; P. Borders, 161; S. Parker, 176, 189; K. Del Prete, 159; C. Shepherd, 173; J. Pax, 140, 140; R. Foster, 165; J. Shepherd, 179, 183, 169; L. Keezer, 168, 146, 153; D. Scott, 144; T. Steinaway, 172, 147, 140; W. Landwehr, 159, 169, 156; G. Brier, 182, 184; E. Reynolds, 143, 148; J. Rabbitt, 168, 157; J. Lewis, 158, 149, 167; G. Klink, 162; G. Blass, 167, 178.

Splits converted: K. Kinsey, 6, 7, 10; S. Parker, 5, 10; K. Del Prete, 6, 10; J. Shepherd, 5, 7, 10; Keezer, 5, 7; C. Shepherd, 5, 6, 10; B. Slater, 5, 7; J. Edick, 3, 10; A. McGinn, 2, 7.

Charlie Brown's Peanut League

Standings as of March 13

	W	L
Crazy Chryslers	5 1/2	21 1/2
Eagles	4 1/2	26 1/2
Wipe Outs	4 1/2	31
Road Runners	3 1/2	41
Snoopy Stars	3 1/2	44
Banana Splits	3 1/2	61
Games over 70: S. Wilson, 71, 83; K. Steinaway, 82; R. Ostrander, 75, 97; D. Bowen, 94, 89; D. Alber, 106, 124; G. Packard, 94, 84; L. Lovely, 83; D. Wilson, 71, 91; C. Hasler, 80; K. Lyndon, 130, 88; D. Stock, 76; D. Seyfried, 95, 109; B. Hasler, 76.		
Series over 140: D. Seyfried, 204; K. Lyndon, 218; S. Wilson, 154; R. Ostrander, 172; D. Bowen, 183; L. Lovely, 149; D. Wilson, 162; D. Alber, 230; G. Packard, 175.		

Guys & Gals Mixed League

Standings as of March 11

Mixed League

Standings as of March 10

	W	L
Chelsea Drug	11 1/2	59
The Pub	11 1/2	62
J & S Tool	11 1/2	65
Inverness Inn	10 1/2	74
Smith's AIAA Service	9 1/2	83
Boyer Automotive	9 1/2	84
Gambles	8 1/2	91
Jiffy Mix	7 1/2	96
3-D Sales & Service	7 1/2	102
Wolverine No. 2	7 1/2	105
Palmer T-Birds	6 1/2	109
Wolverine No. 1	5 1/2	120
Over 200 games: P. Maynard, 203; D. Scott, 205; A. Clemes, 231; J. Toma, 212; J. Fortner, 202, 210, 200; J. Popovich, 213; W. Brown, 245, 201; A. Fletcher, 216; T. Dittmar, 211; C. Koengeter, 236; K. Norris, 211; O. Johnson, 224, 227; K. R. McMannis, 215; B. Johnson, 215; J. Myning, 207; K. Larson, 224; P. Boham, 217; J. Harok, 215; D. White, 201; A. Sannes, 207; L. Hughes, 211.		
Over 600 series: J. Fortner, 612; W. Brown, 612; C. Koengeter, 634; O. Johnson, 647.		
Over 500 series: P. Maynard, 540; D. Scott, 550; H. Burnett, 527; A. Clemes, 597; J. Toma, 541; J. Popovich, 526; M. Sweet, 556; A. Schiller, 510; R. Erskine, 508; A. Fletcher, 553; W. Beeman, 522; T. Dittmar, 536; R. Schenk, 538; S. Policht, 505; K. R. McMannis, 515; B. Johnson, 592; J. Myning, 573; K. Larson, 557; A. Fleischmann, 550; P. Boham, 526; J. Harok, 544; D. White, 541; G. Weir, 527; S. Hopkins, 516; R. Kite, 543; A. Sannes, 546; L. Hocking, 538; H. Huges, 510.		

	W	L
Pub No. 1	76	68
Wolverine Bar	68	68
Pleasant Lake Resort	55	54
Pub No. 4	54	54
Chelsea Lanes	53	53
Steele Heating, Cooling	50	50
Team No. 4	48	48
Four D's	45	45
Ted's Standard Service	39	39
Norris Electric	39	39
Grass Lake	36	36
Sandbaggers	35	35
Team high game: W Bar, 708.		
Team high series: W Bar, 2,051.		
Women's high game: mude, 186.		
Women's high series: P. 526.		
Women's 150 or over series: Elliott, 164, 183, 179; P. 158, 172; S. Greenleaf, Walton, 156; M. Degener, H. Degener, 162; D. Cozzen, B. Smith, 154; J. Schmu, J. Norris, 159; C. Daniels, Mock, 152; N. Packard, 1. N. Collins, 163, 177, 179; merman, 156, 167.		
Women's 450 or over series: Elliott, 528; P. Huston, Packard, 470; N. Collins, Timmerman, 451.		
Men's high game: D. 246.		
Men's high series: D. 702.		
Men's 475 or over game		

+ Services in Our Churches +

ST. PAUL
UNITED CHURCH OF CHRIST
The Rev. Warner Siebert, Pastor
Thursday, March 18—
7:30 p.m.—Long Range Planning Committee.

12:00 noon—Minister's Luncheon at Congregational church.
Saturday, March 20—
9:00 a.m. to 12:30 p.m.—Junior High confirmation program.
10:15 a.m.—Youth Choir.

Sunday, March 21—
9:15 a.m.—Church school.
10:30 a.m.—Worship. Sermon title: "Faith and Marriage."
2:30 p.m.—Laymen's Fellowship at Bethlehem UCC in Ann Arbor.

7:30 p.m.—Senior High seminar on violence.
Wednesday, March 24—
1:00 p.m.—World Wide.
6:45 p.m.—High School Choir.
7:30 p.m.—Lenten service.
8:30 p.m.—Chancel Choir.

Thursday, March 25—
9:00 a.m.—Koinonia Study Group.
7:30 p.m.—Long Range Planning Committee.

ST. JACOB EVANGELICAL LUTHERAN CHURCH
12501 Reithmiller Rd., Grass Lake
The Rev. Andrew Bloom, Pastor
Sunday, March 21—
9:00 a.m.—Sunday school.
10:15 a.m.—Divine services.

CHURCH OF CHRIST
18661 Old US-12, East
R. D. Parnell, Minister
Sunday, March 21—
10:00 a.m.—Church school.
11:00 a.m.—Worship service.
6:00 p.m.—Worship service.
Every Wednesday—
7:30 p.m.—Bible Study.

CONGREGATIONAL CHURCH
(United Church of Christ)
The Rev. Daniel Kellin, Pastor
Sunday, March 21—
10:00 a.m.—Church school.
10:00 a.m.—Morning worship.

ST. BARNABAS
EPISCOPAL CHURCH
20500 Old US-12
The Rev. C. Walton Fitch, Vicar
Telephone 426-8815
Sunday, March 21—
9:15 a.m.—Holy Communion, first, third and fifth Sundays.
9:15 a.m.—Morning Prayer second and fourth Sundays.

OUR SAVIOR
LUTHERAN CHURCH
Rebekah Hall, 1194 M-52
The Rev. William H. Keller, Pastor
Sunday, March 21—
9:15 a.m.—Sunday school and Youth Bible Class.
10:30 a.m.—Worship Service.
Every Thursday—
6:30 p.m.—Youth Confirmation Class.

IMMANUEL BIBLE CHURCH
145 E. Summit St.
The Rev. Frank C. Frinkle
Sunday, March 21—
9:45 a.m.—Sunday school, nursery provided.
11:00 a.m.—Morning worship, nursery provided.
7:00 p.m.—Evening service.
Every Wednesday—
Family hour, prayer meeting and Bible study.

BETHLEHEM EVANGELICAL AND REFORMED CHURCH
(United Church of Christ)
Freedom Township
The Rev. Roman A. Reineck
Sunday, March 21—
10:00 a.m.—Worship.
10:00 a.m.—Sunday school.

FIRST CHURCH OF CHRIST, SCIENTIST
1883 Washtenaw Ave., Ann Arbor
Sunday, March 21—
10:30 a.m.—Sunday school.
10:30 a.m.—Morning service.
Lesson-sermon: "Matter."

ZION LUTHERAN CHURCH
Corner of Fletcher, Waters Rds.
(Rogers Corners)
The Rev. John R. Morris, Pastor
Saturday, March 20—
9:00 a.m. to 12:00 p.m.—Youth Instruction Classes.
Sunday, March 21—
10:15 a.m.—Worship service.
9:00 a.m.—Sunday school.

Monday, March 22—
7:15 p.m.—Junior Choir.
8:00 p.m.—Senior Choir.
Tuesday, March 23—
7:30 p.m.—Women's Shuffleboard.
Wednesday, March 24—
8:00 p.m.—Lenten devotional at St. Thomas.

FIRST ASSEMBLY OF GOD CHURCH
The Rev. Thode B. Thodeson, Pastor
Sunday, March 21—
9:45 a.m.—Sunday school.
11:00 a.m.—Worship service.
7:00 p.m.—Evangelistic service.
Every Wednesday—
7:00 p.m.—Midweek services.

SALEM GROVE UNITED METHODIST CHURCH
Sunday, March 21—
10:00 a.m.—Sunday school.
11:00 a.m.—Worship service.

NORTH LAKE UNITED METHODIST CHURCH
Sunday, March 21—
9:30 a.m.—Worship service.
10:30 a.m.—Sunday school.

PLAN A CAREER.
Take Courses at
Washtenaw Community College

GROUP INSURANCE COMPANY OF MICHIGAN
RAY JOHNSTON
no 769-5000
1200 S. Main
Ann Arbor, Mich.

FLYING HIGH with M-M-MILK

For that high-flying feeling of good health, drink delicious glassfuls of vitamin-enriched milk with every meal and at snacktime, too. It's a treat that can't be beat, so arrange for our regular to-the-door home delivery today by calling GR 5-5771.

Milk is Nature's wonder-food. Drink it daily!

WEINBERG DAIRY
QUALITY PASTEURIZED DAIRY PRODUCTS
Old US-12 Phone GR 5-5771

"Verily I say, this is the Day in which mankind can behold the Face, and hear the Voice, of the Promised One."
—Baha'ullah

Learn more—Come to a Baha'i Fireside
705 S. Main, Chelsea
Thursday, 8 p.m.

CHURCH OF CHRIST
18661 Old US-12, East
R. D. Parnell, Minister
Sunday, March 21—
10:00 a.m.—Church school.
11:00 a.m.—Worship service.
6:00 p.m.—Worship service.
Every Wednesday—
7:30 p.m.—Bible Study.

CHURCH OF CHRIST
18661 Old US-12, East
R. D. Parnell, Minister
Sunday, March 21—
10:00 a.m.—Church school.
11:00 a.m.—Worship service.
6:00 p.m.—Worship service.
Every Wednesday—
7:30 p.m.—Bible Study.

School Board Adopts Several New Policies

The following policies were adopted at Monday evening's meeting of the Board of Education. They outline the board's policy regarding the field trips, use of school busses, and pregnant students.

Pregnant Students—
A person who has not completed high school may not be expelled or excluded from a public school because of being pregnant. (Act No. 242, Public Acts of 1970)

The educational program of the student may be completed in the Chelsea School District.

Excursions, Field Trips and Athletic Trips Policy—
The board of education encourages the use of school busses to supplement the instructional program of pupils. Planned and organized trips are very helpful and educational but should be coordinated with the regular instructional program.

School busses are restricted to the use of school groups. Administrative Regulations on Excursions, Field Trips, and Athletic Trips—

A. General regulations:
1. All pupils who ride on the bus going must return on the bus unless requested by parent or guardian in person to return in another manner.
2. An adult, in addition to the driver, shall be in charge of each bus and responsible for the pupils at all times.

3. The approval of the principal and business manager is necessary for the use of busses for excursions, field trips and athletic contests.
4. Any pupil who does not obey the rules and regulations as prescribed herein may be refused future transportation.

5. Costs for excursions, field trips, and athletic trips shall be the responsibility of the board of education.
B. Out-of-town trips (Private Car)
1. Any pupils attending any school activity away from school

must have adult supervision in each car.
2. Adults, preferably, should be drivers.
3. Pupils shall return in the same vehicle in which they rode going, or changes must be approved by person in charge on request of the parent in person.
4. The school will take no responsibility for out-of-town trips unless the above provisions are complied with completely.

C. Excursions
1. Special school excursions for excursions, field trips and travel.
2. The teacher is in charge of pupils at all times.
3. The itinerary of the trip, including time of leaving, route, rest and lunch stops, approximate time of arrival at destination, and approximate time of return to starting point, will be arranged by the teacher with the approval of the principal.

D. Field Trips
1. The teacher is in charge of the pupils at all times.
2. Each teacher is requested to limit field trips to two (2) per year if possible.
E. Athletic Contest Trips
1. Only participants, coaches, or school officials may ride on buses.
2. Pupils must ride on the bus in order to participate in the contest.
3. The head coach or athletic director shall be in charge of the participants at all times.

4-H Clubs
FREE ACRES
This week's meeting of the Freer Acres 4-H club was held at the home of Mrs. Robert Daniels. Beginning part of the meeting was devoted to checking of garments, and the girls were able to ask a few final questions.

Mrs. Robert Robbins, and Mrs. Gloria Greenleaf were on hand to help out.
Mrs. Daniels gave the news of the Mothers Fashion Show, and of the Achievement Days.

The girls then went over the evaluation sheet, with some help from Mrs. Daniels. After a few questions, final check on the garments was made.
Diane Robbins, scribe.

Witnesses Will Hear Regional Supervisor
Duane Emshoff, regional supervisor of the 16 congregations of Jehovah's Witnesses in south central Michigan, will be in Chelsea the week of March 16 through 21.

Emshoff will supervise five hourly meetings during the week, which will commence on Tuesday evening, March 16. Speaking at 7:30, and then again at 8:30, Emshoff will speak on ministry training school. These meetings will stress basically bible talks, and bible reading.

Saturday evening, he will deliver a talk entitled "New Things Learned About the Bible." This will be at 8 p.m.
Highlight of his visit will be a talk on Sunday morning, March 21, at 9 a.m., entitled "Decisions You Face—How Will You Make Them." All lectures will be delivered at 13699 Old US-12.

Save money by spending enough.

The cost of painting a house or a room isn't all in the paint. A lot of money goes for labor, trouble and time, even if you do it yourself. So lengthen the time between paint jobs by using quality Dutch Boy Paints. Dutch Boy—Is the sign of quality—which means your paint stays beautiful longer. That's why millions of homeowners are willing to pay a little bit more for Dutch Boy Paint today—you'll have many more years of enjoyment ahead of you.

ST. THOMAS EVANGELICAL LUTHERAN
The Rev. Daniel L. Mattson, Pastor
Sunday, March 21—
10:00 a.m.—Worship service.
11:00 a.m.—Church school.
6:30 p.m.—Baptist Youth Fellowship.
7:30 p.m.—Evening worship service.

METHODIST HOME CHAPEL
The Rev. R. L. Clemons, Chaplain
V. O. Johnson, Administrator
Sunday, March 21—
8:45 a.m.—Worship service.

ST. JOHN'S EVANGELICAL AND REFORMED CHURCH
(United Church of Christ)
Francisco
The Rev. Robert Townley
Sunday, March 21—
10:00 a.m.—Worship service.
10:20 a.m.—Sunday school.

NORTH SHARON COMMUNITY BIBLE CHURCH
Sylvan and Washburn Rds.
The Rev. William Ensten, Pastor
Sunday, March 21—
10:00 a.m.—Sunday school.
11:00 a.m.—Worship service.
6:30 p.m.—Young People's service.
Every Wednesday—
7:30 p.m.—Prayer meeting.

CHELSEA BAPTIST CHURCH
337 Wilkinson
The Rev. James Stacey, Pastor
Sunday, March 21—
10:00 a.m.—Sunday school.
11:00 a.m.—Worship service.
Nursery care available during all services.
6:00 p.m.—Junior and Senior Baptist Youth Fellowship.
7:00 p.m.—Evening worship.
Every Wednesday—
7:30 p.m.—Bible study and prayer meeting.

VILLAGE UNITED METHODIST CHURCH OF WATERLOO
8117 Washington St.
Mrs. Altha Barnes, pastor
Sunday, March 21—
10:00 a.m.—Sunday school.
11:15 a.m.—Morning worship.

FIRST UNITED PRESBYTERIAN CHURCH
Unadilla
The Rev. T. H. Liang
Sunday, March 21—
9:45 a.m.—Sunday school.
11:00 a.m.—Worship service.
Every Tuesday—
8:00 p.m.—Choir practice.

An estimated 9 million Americans are ill from alcoholism and 80,000 die from it annually.

MERKEL BROS.
If there's quality on the inside, there's a Dutch Boy on the outside.

CHELSEA VILLAGE COUNCIL PROCEEDINGS

March 16, 1971
Council Room

Regular Session.
This meeting was called to order by President Fuks at 8:00 p.m. Present: President Fuks, Clerk Harvey, Administrator Weber, Trustees Borton, Gorton, Musbach, Dmoch, Boylan and Chandler.

Motion by Chandler, supported by Borton, to purchase (1) one Motorola Model No. T1398 "PL" Remote Control Console to be used by the Police Department's dispatcher at a total cost of \$537.00. Roll call: Yeas all. Motion carried.

Motion by Musbach, supported by Boylan, to adopt a resolution to enter into an agreement with the Michigan Department of State Highways to pay 50 percent of the cost to install a flashing beacon at the intersection of M-52 and Old US-12 with the estimated cost to the Village of \$865.00. Roll call: Yeas all. Motion carried.

A letter from the firm of Finkbeiner, Pettis & Strout, sanitary sewer engineers, was read and discussed regarding a request from North American Rockwell to discuss regarding a request for sanitary sewer system. No official action was taken pending comments from the Michigan Department of Health.

Further discussion was held regarding the public hearing set for March 30, 1971 to consider adopting new water rates.

Motion by Boylan, supported by Chandler, to authorize payment to Finkbeiner, Pettis & Strout in the amount of \$2,000 from the Electric & Water Department for engineering services for the Sanitary Sewer Trunk Expansion. Same sum to be repaid to the Electric & Water Dept. upon sale of the sewer bonds. Roll call: Yeas all. Motion carried.

Trustee Musbach read a summary of the Police Department activity for the month of February as submitted by Chief Meranuck.

Motion by Chandler, supported by Boylan, to transfer \$20,000 from the Electric & Water Department to the Village General Fund. \$10,000 of which will be repaid to the Electric & Water Department upon receipt of Village taxes. Roll call: Yeas all. Motion carried.

A request was received from Consumers Power Co. to use the Village right-of-way to their Washtenaw Substation in the event of an emergency. No action was taken pending an opinion from the Village Attorneys.

Motion by Musbach, supported by Dmoch, to authorize and direct the Clerk to issue checks in payment of General Fund bills in the amount of \$6,377.40. Roll call: Yeas all. Motion carried.

YES
WE ARE MAKING
LONG-TERM FARM
REAL ESTATE
LOANS

SEE US
Federal LAND BANK Association
Ann Arbor, Mich. 48103
P. O. Box 1006
Ph. 769-2411 3645 Jackson Rd.

CLARK BUSHNELL FLOOR COVERING SERVICE
Linoleum • Tile
Kitchen Carpet
Sales & Installation
For Samples and Free Estimates
CALL CHELSEA
475-7180

PRICE FIGHTER

MORE PEOPLE DRIVE DODGE DARTS THAN ANY OTHER COMPACT CAR IN THE UNITED STATES!

DODGE DART SWINGER AUTOMATIC
NO CHARGE FOR
AUTOMATIC TRANSMISSION!

Dodge CHRYSLER
AUTHORIZED DEALERS

IT'S LIKE HAVING UP TO \$190.60* TAKEN OFF THE STICKER PRICE OF THE SPECIALLY EQUIPPED 1971 DART SWINGER HARDTOP.

Yes, it's back again. The Dodge Boys' repeat of a sellout. Only this year we've added extra "goodies" to make our Swinger Automatic even more attractive. Check with the Dodge Boys today. See what a real price-fightin' deal you'll get on a new 1971 Dart Swinger Automatic. Buy the specially equipped Dart Swinger hardtop—get the automatic transmission at no extra charge. No wonder it's such a swingin' sellout!

Swinger Automatic Package includes:
■ 3-speed automatic transmission (no charge)
■ Vinyl roof
■ 6.95 x 14 white sidewall tires
■ Deluxe wheel covers
■ "Rim Blow" deluxe steering wheel
■ Bumper guards (front and rear)
■ Body-side moldings (with vinyl inserts)
■ Belt moldings
■ Remote-control outside mirror, left side
■ Convenience Light Package

*Mfr's. Suggested Retail Price for Dodge TorqueFlite automatic transmission on 6-cylinder Dart models: \$190.60. On 6-cylinder models: \$182.95.

THE GOOD GUYS ARE IN YOUR CORNER KNOCKING DOWN RISING CAR PRICES!

MORE PEOPLE DRIVE DODGE DARTS THAN ANY OTHER COMPACT CAR IN THE UNITED STATES.

G. A. SALES & SERVICE, INC.
1185 MANCHESTER ROAD
CHELSEA, MICHIGAN

PRICE FIGHTER THE DODGE BOYS

Motion by Borton, supported by Dmoch, to adjourn. Roll call: Yeas all. Motion carried. Meeting adjourned.
Richard Harvey, Clerk.

At night all male agama lizards of West Africa turn a dark brown, but when dawn comes their colors turn a variety of shades.

No matter where you live

You're sitting pretty with perfect color and black-and-white TV reception with the NEW

COLOR VECTOR antenna from CHANNEL MASTER

LIVINGSTON ANTENNA SERVICE
Call 475-8783
14700 Jerusalem Rd., Chelsea

St. Patrick's Day Party Held at St. Louis School

Annual St. Patrick's Day party was held Wednesday afternoon at St. Louis school. "Green Power rules the day," claimed Mrs. Bill Robbins, employee at the school, and special guest of honor at the party.

Mrs. Robbins, who is an Irish war bride, was presented with a bouquet of shamrocks by Sister Uidercia, who grows the little green plants at the school.

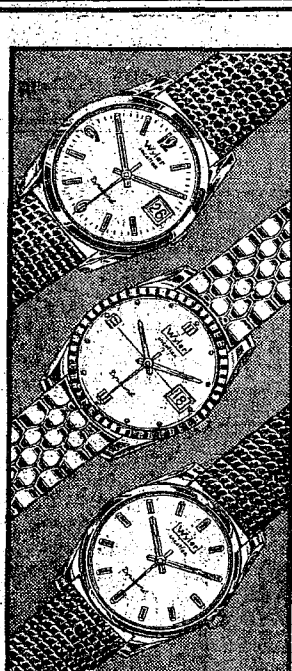
Special decorations in honor of the saint's day, and a cake, specially decorated for the occasion, made the party a festive affair. The St. Louis school band played some of Mrs. Robbins' favorite tunes.

Patrick Deacon's birthday was also celebrated at the festivities, and Kevin Mack won the prize as the boy wearing the most green. He was rewarded with a double serving of ice cream.

Danny O'Brien and Joseph Hayes entertained with an Irish Dance. Wayne Kennedy, John Martin, and Patrick Cosgro joined Mrs. Robbins in being honored for being 100 percent "real" Irish.

To Explain Scholarships

Friday of this week, March 19, at 2 p.m., a representative of the Preston Beauty Academy, Mr. Preston, former owner of the House of Orient in Chelsea, will talk to Chelsea High school counselors to review their scholarship program.



Top - \$69.50 • Center - \$79.50 • Bottom - \$59.95

Wyler Incalflex DYNAWIND winds itself as you wear it

Winds itself. Automatically. Continuously—as long as you wear it. All Wyler watches have the famous Incalflex balance wheel. Guaranteed against shock for the life of the watch or replaced free if ever broken. Written renewable lifetime waterproof guarantee is good as long as crystal is intact and genuine Wyler parts used. In a broad range of handsome men's styles and prices.

Wyler Incalflex balance wheel G-I-V-E-S with shock... guaranteed for life against damage.

WINANS JEWELRY

Letters to the Editor

To The Editor:

We, the concerned taxpayers of Freedom and Lima townships, are proud to pay our taxes on time without concern. For the first time in 38 years, I met with the Board of Review to discuss tax problems; not just my own, but also those of senior citizens who are qualified for tax reductions only to find that their evaluation has tripled. I am appalled to think that out future generation, with professional recommendations on dairy operations and also on livestock feeding, may be flushed down the drain by higher taxation.

I would like to recommend to local school boards that they be sufficiently concerned when meeting with the supervisors to discuss tax problems. I would like to refer to your decisions as a group which met with the Lima Board of Review to discuss tax problems. The members of the Board agreed to give their support on our recommendations to withhold our taxes of 1971 and thereafter until tax regulations are properly adjusted to agricultural purposes and the like.

In conclusion, the supervisor of Lima township recommended to us that this was the proper procedure and he stated he would work with us in Lima. Following discussion, 23 taxpayers agreed to organize and select a leader, either an attorney or an elected individual, to represent us as protesters, but not as a violent or an enemy building group. We are assured that our neighboring townships will organize with us or individually. There have been no connections between townships other than referring to other township taxpayers for their comments. After all, if state lawmakers would spend a fraction of their time on tax reform instead of legal abortions, welfare reform and the lowering of penalties on drug abuse, we could have avoided a natural abortion on taxes. With labor organized and teachers organizing, I feel free supporting an organization on tax reform.

Your tax protester,
LeRoy Heller.

To The Editor:

I was most interested in Jeff Reed's letter in last week's Standard. His discontent with Chelsea seemed totally irrational yet obviously real. I sincerely doubt that there is a lack of interesting

things to do in this town—people can almost always find exciting things to do together if they have motivation.

Unfortunately, American society has decided that pleasure is a commodity. As a result we feel compelled to drown orgastically—and if we can't, we feel deprived. This is absurd because pleasure and joy are not really something an industry can produce for people to consume. Marketable pleasure is counterfeit and no more nourishing than paper.

However, Jeff Reed and most of the rest of us apparently believe this mad hogwash. But I doubt whether we would really be happier if there were dozens more "interesting places" in Chelsea. Real and lasting pleasure and joy can only come where there is a sense of participation.

It is time that we recognized that the progress before all else, consumption is happiness orientation of our sociological society has sapped the mass of people of any feeling of participation in their own lives. We must realize that the joy of being something more than just a consumer is priceless. It used to be that work supplied that feeling of participation to most people—but now most people work as appendages of machines or at similarly unfulfilling jobs.

I am not totally sure of the answer to this problem but it certainly involves some degree of disengagement from our present over-mechanized, over-consuming society. As Joni Mitchell says in the song "Woodstock," "We've got to get back to the land; set our souls free."

Jay Smith.

Editors:

Since the new assessments on the homes and property in Chelsea have come out, I've heard a lot of complaints. Many of them were justified, since the assessments were ridiculous.

There ought to be a law that the state would HAVE to buy your house or property, at what THEY assessed it at, if you wanted to sell it. That would make them think twice before they assessed the property so high.

R. E.

To The Editor:

"God wants the youth to become men of earnest mind, to be prepared for action in His noble work, and fitted to bear responsibilities. God calls for young men with hearts uncorrupted, strong and brave, and determined to fight manfully in the struggle before them, that they may glorify God and bless humanity. If the youth would but make the Bible their study, would but calm their impetuous desires, and listen to the voice of their Creator and Redeemer, they would not only be at peace with God, but would find themselves ennobled and elevated." It will be for your eternal interest, my young friend, to give heed to the instructions in the word of God, for they are of inestimable importance to you." (Message to Young People, page 21).

The above inspired counsel came to my attention as I read of Jeff Reed's plight as he complained "there is nothing in this town to do except talk about your neighbors!"

There is more to life than entertainment, Jeff Reed, and in a positive, constructive spirit I suggest that you contact some of the clergymen of the many churches in your area, and in one visit I believe you will discover challenges that will test your courage and manhood all the days of your life!

I have lived in Detroit most of my 62 years of life, and I know that "the time is near when large cities will be swept away, and all should be warned of these coming judgements." (Evangelism, page 29).

For years I have told many people of the lovely town of Chelsea and pray that some day soon the way may be opened for me to

Club and Social Activities

LYNDON FARM BUREAU

Lyndon Farm Bureau met at the town hall for a 7 p.m. supper on March 13. Twelve members were present. The regular business meeting was held.

Mr. and Mrs. Carl Schoonover just returned from a trip to Arizona. They talked of some of the highlights of their trip.

The group is looking forward to next month, when Mr. and Mrs. Schoonover will show their slides. Next meeting is April 10, for a pot-luck supper. A social evening of cards followed the business meeting.

PAST NOBLE GRANDS

Past Noble Grand of the Chelsea Rebekah Lodge met at the home of Mrs. Mac Packard March 6, for a dessert luncheon. Mrs. Harry Burnett was co-hostess, although she was not able to attend the meeting.

Guests included Miss Nadine Packard, vice-grand of the lodge, and Mrs. Ruth Dancer, from Stockbridge.

Theme for the evening was St. Patrick's Day. Mrs. Dorothy Keeler, displaying what members felt was "the luck of the Irish," won the door prize. Lucky Napkin winner was Gladys Breitenwischer, while Mrs. Ida Nixon won a prize for winning the guessing game.

Mrs. Gilson reported finishing two lap robes for the IOOF Home in Jackson. Members brought shears, and cut piece blocks for more robes. Mrs. Dancer won a prize for cutting the most blocks in a given time.

Announcements of the District 12 meeting in Jackson, March 24, and a rummage sale, April 23-24, were made.

Mrs. Hazel Dvorak will entertain the club on April 15, with Mrs. Marion Pickell as co-hostess. The local lodge is invited to Home City Lodge March 19, to witness the initiatory work for all new members.

VFW AUXILIARY

Regular business meeting of the VFW Auxiliary was held Monday March 15, in the Rebekah hall, with 12 members present. Meeting had been postponed from March 8 due to weather conditions. Draping of the charter was held in memory of Mrs. Anna Werner, who died March 3.

Mrs. Kenneth Platt and Mrs. Mac Packard gave reports of the Sixth District meeting held Sunday, March 14, in Maybee. The March social meeting will be held in the Rebekah Hall. Committee will be Mrs. Fred Klink, Sr., chairman; Mrs. Ira Keeler, Mrs. Muriel Juergens, and Miss Joan Platt.

Americanism chairman, Mrs. Mac Packard, reported on the presentation of flags to the Cub Scouts at their blue and gold dinner.

Next regular business meeting will be April 12, with election of officers and district delegates.

Planning to redecorate? Brighten up your home with color. Paint a high ceiling in a darker or brighter color than walls. Pick up an accent color in your carpet, upholstery or draperies. In a large room, enhance a painting, fireplace or furniture ensemble by painting the background wall a vibrant color.

live there and when that day comes I would like to personally meet solid citizen Jeff Reed!

Yours sincerely,
Matthew Bokmiller.

weddings by david
personalized photography
... because your wedding is unique.

ann arbor 769-0053

Chelsea Persons Active in Florida

Mr. and Mrs. John Steele, Sr., and Mrs. John Steele, Jr., and children, of 13877 Old US-12, visited the Citrus Tower, in the highlands of central Florida, at Clermont in early March, while visiting Florida.

Other sights the group has visited on their trip included a visit to the Disney World Preview Center, and the Burch Gardens.

Other news from Florida reported that a "Chelsea Day" was held at the Shockley Hills Club House, in Shockley Hills, Fla., on Sunday, Feb. 28. The event was a gathering of former Chelsea residents now living in Florida, who lived within 40 miles of Shockley Hills.

Mr. and Mrs. Garnett Weir, Mr. and Mrs. Clarence Lake, and Mr. and Mrs. Donavan Sweeney, were hosts for the event. Guests included Mr. and Mrs. Vincent Howell, Mr. and Mrs. Harold Scott, Mrs. Mabel Butler, and Mr. and Mrs. Harold Knott, all of Sanford. Mr. and Mrs. Harkless Hoskins of Tavares, and Mr. and Mrs. Donald Thomas, Sr., of Leesburg, attended along with Mr. and Mrs. Donald Thomas, Jr., of Eustis, and Mrs. Don Parsons of Chelsea.

Special guests included the Weirs' daughter, Mary, and her friend, Donna, of Ann Arbor.

The party featured a pot-luck dinner at 1 p.m., and lots of visiting. After dinner, a few games of shuffleboard were played.

Mr. and Mrs. Wes Howes of Daytona Beach, and Mr. and Mrs. Ralph Denman, of Tavares, were unable to attend the party, as they had originally planned.

Differential Aptitude Tests To Be Given To All 10th Graders

Wednesday, March 24, in the High school auditorium, the Differential Aptitude Battery will be administered to all 10th grade students. The all-day test will include testings in verbal reasoning, numerical reasoning, abstract reasoning, clerical speed and accuracy, and mechanical reasoning.

SCHOOL LUNCH MENU

Week of March 22-26

Monday, March 22—Porcupine meat balls with buttered rice, bread, butter, pears, and milk.

Tuesday, March 23—Macaroni and cheese, buttered peas, bread, butter, dish of fruit, brownie, and milk.

Wednesday, March 24—Pinto burgers, buns, trimmings, cole slaw, potato sticks, fruit, Jell-O, and milk.

Thursday, March 25—Beans and franks, tossed salad, bread, butter, apple crisp, and milk.

Friday, March 26—Tuna casserole, buttered green beans, hot rolls, butter, cherry dessert, and milk.

School Bus Fire Extinguishers Damaged

Chelsea Police Officer Louis Schneider discovered the theft of a number of fire extinguishers from the Chelsea School district school buses on the evening of Feb. 2. Schneider was on routine patrol at the high school, when he noticed that the door on one of the buses was open. He stopped to investigate, and found that the fire extinguishers from 18 buses had been taken from their vehicles. Schneider found 12 of the extinguishers lying about the area. Seven of them were in need of repair.

Six of the stolen extinguishers have not been recovered, Chelsea police indicated.

School officials estimated the incident cost the school system \$194 to repair and replace the stolen property.

Camera Club Sees Slides of Spring in Southwest Area

Twenty members and four guests were present for the March monthly meeting of the Chelsea Camera Club, Tuesday evening, March 16.

Assignment for the meeting was to bring slides of winter scenes. The slides were viewed and discussed, taking into consideration composition, lighting, and unusual effects made by taking the shots at certain times of the day.

Mr. and Mrs. Richard Sooy showed slides entitled, "Spring in the Southwest." The Sooy's traveled by camper, visiting Bryce, Yosemite, and Sequoia National Park, and national monuments in Arizona, and Utah. Hiking to many areas which could not be reached by vehicular travel, they were able to obtain some fine shots of breath-taking views.

Slides featured the many blossoms which turn the arid areas in the desert into a colorful car-

pet when plenty of moisture prevails. It was a beautiful sight, members agreed. Also included in the photos were slides of the many different cacti.

Refreshments were served at the close of the meeting.

Any person in the community with slides or movies, who would like to show them at the Camera Club meetings should contact either Mrs. Leon Chapman, or James Liebeck.

Michigan State University at East Lansing was the first land grant college.



AUTOMOBILE CLUB OF MICHIGAN

Membership and Insurance

JACK SCHLAFF

Ann Arbor 769-5000 Dexter 426-8593

VILLAGE BEAUTY SALON

LORETTA PANNONE, Owner-Operator
CINDY - EULA - JANICE - SARA

107 N. MAIN PHONE 475-5421

OPEN MONDAY THRU SATURDAY
Evenings, Wednesday and Thursday

GOING SOUTH? Face the warmer weather with a light and breezy Florida Shag. Try any of our expert stylists.

EASTER BASKETS

Big ones, little ones, long ones, short ones!

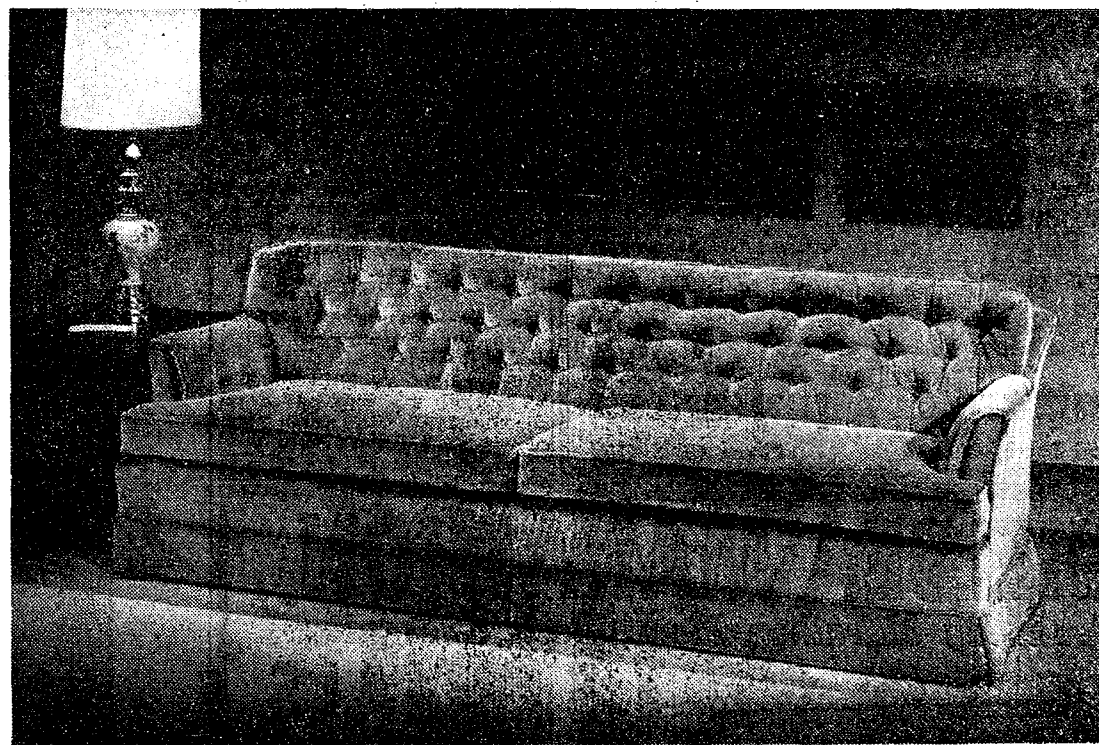
Come in and browse.

TAILFEATHER BOUTIQUE

105 N. Main St. - Chelsea

SALE - SAVE 10%

on FRANKLIN FURNITURE



Order and sofa, chair or loveseat in Franklin's line during March and Save 10%. Traditional, Colonial and Modern designs. Hundreds of fabrics in all colors and patterns. Finest quality frames, expert tailoring.



Merkel

FURNITURE and CARPET

Open Monday and Friday Until 9 p.m. Phone Chelsea 475-8621

A & W ROOT BEER DRIVE-IN

NOW OPEN



Open 11 a.m. to 9 p.m., 7 Days A Week
Call Ahead for Carry-Out Orders, Ph. 475-2055



CHELSEA A & W ROOT BEER DRIVE-IN

1535 CHELSEA - MANCHESTER ROAD

Baha'is Will Celebrate New Year Saturday

Chelsea Baha'is will begin spring and their new year with a bang on Saturday, March 20 at Beach Junior High school. There will be a pot-luck dinner and a movie, "It's Just A Beginning." More Than 100 Baha'is are expected to come with family and friends to celebrate the end of a 10-day fast and the beginning of the Baha'i Year 128.

The Baha'i Faith is an independent world religion that was revealed by the prophet, Baha'u'llah, in Persia in 1863. Baha'u'llah unequivocally claimed to be the fulfillment of many prophecies, including Islamic prophecies concerning the coming of the Twelfth Imam and the Biblical prophecies and promises concerning the return of Christ.

Baha'i teachings predict the unity of mankind and a not-too-distant political peace followed eventually by "The Most Great Peace," when the majority of men would be guided by spiritual motives, not material. Baha'is are already represented by all races, classes and creeds in most of the countries of the world.

There are Baha'i books at McKune Memorial Library which include some of Baha'u'llah's own writings. Anyone who is interested in attending the pot-luck to meet the Baha'is may call Doris and Craig Parker or Toby, Sandra, or Joyce Peterson in Chelsea.

Vandals Damage Chair in Laundromat

Unknown person, or persons, did extensive damage to the interior of the Laundromat, located at 114 W. Middle St., sometime during the evening of March 7. Morgan Rowe, manager of the establishment, notified Chelsea police that that evening someone, or a group of individuals, cut up the upholstery of a hair-drying chair located in the laundromat. The chair will cost about \$80 to be repaired.

Michigan's State Flower: Apple Blossom.

EDUCATION IS OUR BUSINESS

Try It!

WASHTENAW

COLLEGE

COMMUNITY



SPRING SALE

Our Complete Floor Stock of Fine

FURNITURE & APPLIANCES

offered at

BIG REDUCTIONS to help you get your home spruced up for spring!

Included are such famous names as Frigidaire ranges, washers, dryers, refrigerators; Krøehler, Tell City, Berkshire and Bassett furniture; Serta mattresses; Downs carpeting; Rembrandt lamps, and many others.

MEABON'S TV, Furniture & Appliances

1170 M-52 South, Chelsea

Phone GR 5-5191



SCOUT EQUIPMENT TRAILER: Boy Scout Troop 420's new equipment trailer, which was built and donated to the troop by fathers of the boys, can carry all the needed equipment for a camping

expedition with one vehicle. The trailer has compartments for tents, tent poles, camping gear, and all the necessary cooking gear, as well as a rear door, that converts to a table.

Fathers Build Equipment Trailer for Boy Scout Troop

Adult supporters of Boy Scout Troop 420 helped build an equipment trailer for the troop this past winter, to enable one vehicle to move all the troop's equipment to any camp site.

The trailer, which is eight feet long, and four feet wide, has five doors on either side that open to reveal tents, and other camping equipment on the shelves. Cooking grills stay on a shelf on top, while the back of the trailer opens down to form a table. Cooking gear is stored on shelves directly inside the door. Long tent poles are kept in an eight-foot opening in the bottom of the trailer.

The trailer was built at the home of Richard Seyfried, and was later moved to the home of Cecil Clouse, where he designed the patrol medallions, and lettered the outside.

Approximately 150 man-hours were volunteered by the boys' fa-

thers, who also donated all the materials for the vehicle. Men who worked on the trailer include Richard Seyfried, Ken Platt, Norm Bauer, Cass Case, Larry Cameron, Tom Klobuchar, Carm Slocum, Skeets Worden, Art Stoll, and Cecil Clouse.

Dexter K. of C. To Mark 25th Anniversary

March 17, 1946, a group of Knights of Columbus separated from the Ann Arbor K. of C. Council and along with new members initiated that day, received the Dexter Council charter. This class was comprised of men from both Dexter and Chelsea. Chelsea later formed its own council.

Invitations have been mailed to charter members from Dexter and Chelsea, widows of members, present members, past and present chaplains (pastors) and benevolent friends of the Council and the State of Michigan Grand Knight.

The Council urges all charter members, whether present members or not, to attend this once in a lifetime event and renew old friendships and meet the new ones. A reply is requested as soon as possible from all receiving invitations.

Due to the lenten season, the celebration to commemorate this occasion will be held at the Ann Arbor K. of C. facilities on Jackson Ave., April 23.

A gala evening of cocktails, hors d'oeuvres, dinner, a short program and dancing is being planned.

The event is scheduled to begin at 5:30 p.m. according to Dan Dahmen, the chairman, who may be contacted for further information. If someone inadvertently did not receive an invitation, please notify chairman Dahmen.

The Justice Department hires 18,592 people.

Wildlife Contest Started By Junior High Conservation Club

"Wildlife, Who Needs It?" is the theme of the 33rd annual National Wildlife Week which will be held March 21-27. This annual event, which is observed by the National Wildlife Federation across the United States, will also be celebrated in Chelsea this year, according to Gary Wellnitz, president of the Beach School Conservation Club. Gary explained that the Chelsea group is very concerned over the condition of wildlife, adding that "there is no greater need today, than to recognize wildlife as the early warning system to the condition of our environment."

More than 100 species of wildlife are in danger of extinction, because of man's thoughtlessness, through pollution of water and air, indiscriminate use of persistent pesticides, and unplanned and often unnecessary land and water developments.

"Apologists for continued pollution and poor land use often say that conservationists are more interested in wildlife than in people."

Such statements need to be exposed for what they are," Gary explained.

"We must consider the needs of wildlife in all our activities, or face an ever-decreasing quality to our own lives. Everything we do to the environment which affects other animals, has a delayed but negative effect on our existence."

In conjunction with National Wildlife Week, the Beach school Conservation Club is sponsoring a contest, featuring essays, posters, and photographs of wildlife, based on the theme, "Wildlife, Who Needs It?" Winners of the contest will be announced at the National Wildlife Week assembly held at Beach school Friday afternoon, March 26.

SOLAR ENERGY

Every second, four million tons of solar hydrogen transforms itself into radiant energy that floods into space. Yet the sun is so huge that it can continue to consume itself at this rate for billions of years.

DEXTER JAYCETTES

announce the

SPRING FASHION REVUE

THURSDAY, MARCH 18

Wylie School Cafetorium - 7:30 p.m.

PLYMOUTH SATELLITE our whole new idea in 2-doors

	Satellite	Torino	Chevelle
Base Car	\$2758.00	\$2801.00	\$2802.00
Automatic Trans. (3-Speed)	216.40	217.00	216.50
Power Steering	116.25	115.00	115.90
Power Brakes (Disc)	69.60	70.00	69.55
Radio-AM	66.40	66.00	66.40
Whitewall Tires (Lowest Priced)	29.15	32.00	28.15
Wheel Covers (Lowest Priced)	27.35	26.00	26.35
Air Conditioning	388.00	412.00	407.60
Chrome Drip Molding	12.95	Std.	N.A.
Cigarette Lighter	4.35	Std.	Std.
Day/Night Mirror	7.65	Std.	Std.
TOTAL	\$3696.10*	\$3739.00*	\$3732.45*

More than Satellite **\$42.90** **\$36.35**

*Based on manufacturers' suggested retail prices for comparably equipped 2-door models, excluding state and local taxes, dealer destination and preparation charges, and equipment required by state law.

Beats competition on looks and price!

When we introduced our new Satellite, we knew we had a winner. Now it's official. Because Road Test magazine just named our Satellite "1971 Car of the Year" over some pretty stiff competition. And

as if it weren't enough to come out No. 1 on styling, handling, comfort and all the other criteria used in the judging, take a look at the chart above and see for yourself... we even beat our chief competition,

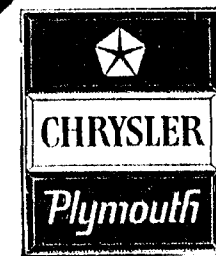
Torino and Chevelle, on price as well!

Our new Satellite. C'mon through and get the deal of the year on the "Car of the Year" at the right place. Our place. We'll come through for you.



Plymouth Satellite

AUTHORIZED DEALERS CHRYSLER MOTORS CORPORATION



Coming Through.

CHELSEA MARATHON

Featuring Marathon Money-Back Guarantee

SPECIALS

SUN TUNE-UP
SPARK PLUGS - POINTS
CONDENSER

Complete with the famous
SUN Tune-Up Check

V-8 - \$19.95

6-cyl. \$17.55

FREE LUBRICATION
With Every Oil Filter
Change

We're ready to serve you
with the lowest possible
prices.

Specialists in
MOTOR TUNE-UP
VALVE GRINDING
TIRE BALANCING
ENGINE REBUILDING
ENGINE MODIFICATIONS

FRED A. WORDEN, Prop.

930 S. Main St.

Phone 475-2804

Chelsea, Mich.

G. A. SALES & SERVICE · 1185 Manchester Rd.